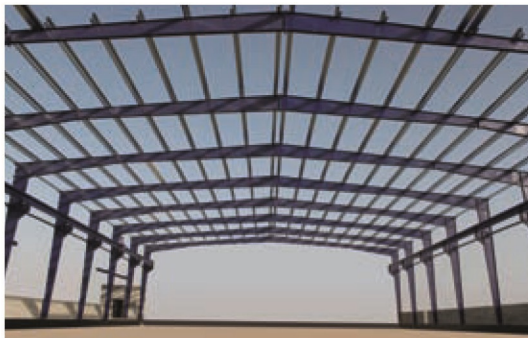




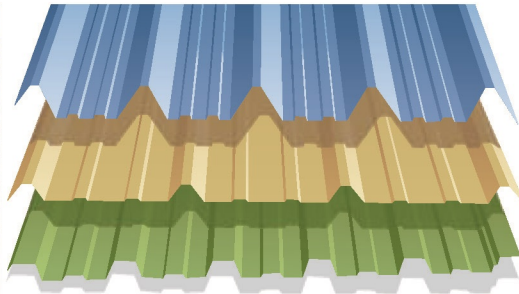
An ISO 9001:2008 certified Pre-Engineered Steel Building Company

## **PRE-QUALIFICATION** **DOCUMENTS**

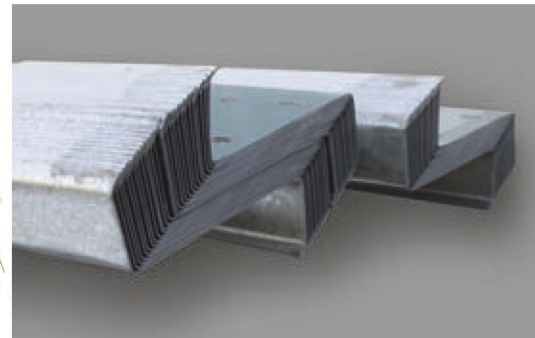
Design, Manufacture & Erection of:



**Pre-Engineered Steel Buildings**



**Profile Sheets**



**Purlins**

# PEB

PRE-ENGINEERED STEEL BUILDING

[www.nwewllc.com](http://www.nwewllc.com)

We Provide  
**Solutions** 



## **NORTH WEST ENGINEERING WORKS L.L.C.**

### **INDEX**

<b>1)</b>	<b>Company Brochure</b>
<b>2)</b>	<b>Company Profile</b>
<b>3)</b>	<b>Projects Photographs (Executed)</b>
<b>4)</b>	<b>List of Projects Executed</b>
<b>5)</b>	<b>List of Projects under Execution</b>
<b>6)</b>	<b>Q.A. / Q.C. Policy</b>
<b>7)</b>	<b>HSE Policy</b>
<b>8)</b>	<b>Organization Chart</b>
<b>9)</b>	<b>Method Statement</b>
<b>10)</b>	<b>Certifications:</b> <ul style="list-style-type: none"><li><b>• ISO 9001-2008 Certificate</b></li><li><b>• PDO Certificate</b></li><li><b>• P.I.E. Certificate</b></li><li><b>• Chamber of Commerce Certificate</b></li><li><b>• Industrial Certificate</b></li><li><b>• Company Registration Certificate (CR)</b></li></ul>



## **COMPANY BROCHURE**



An ISO 9001:2008 certified Pre-Engineered Steel Building Company

Design, Manufacture & Erection of :  
• Pre-Engineered Steel Buildings  
• Profile Sheets • Z-Purlins • Accessories

# PEB

PRE-ENGINEERED STEEL BUILDING



We Provide  
Solutions

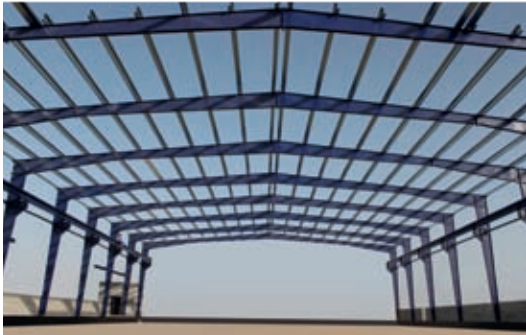
[www.nwewllc.com](http://www.nwewllc.com)



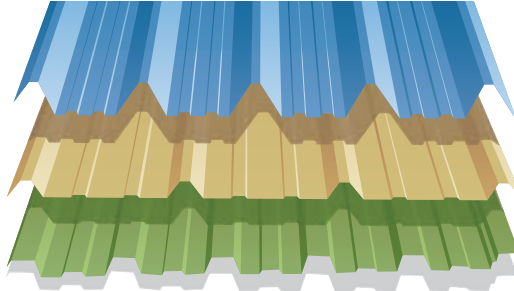


An ISO 9001:2008 certified Pre-Engineered Steel Building Company

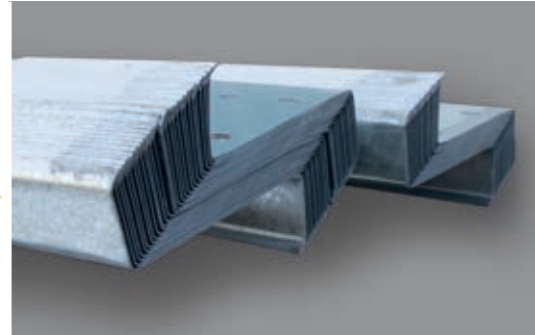
Design, Manufacture & Erection of:



Pre-Engineered Steel Buildings



Profile Sheets



Purlins

**PEB**

PRE-ENGINEERED STEEL BUILDING

[www.nwewllc.com](http://www.nwewllc.com)

We Provide  
Solutions



**“Our vision is to provide utmost professional services in Engineering, Production, Quality Assurance & Project Management of Pre-engineered Steel Buildings to assure customer satisfaction.”**

**“We being a local PEB company in the Sultanate of Oman, continuously strive to exceed our customer’s expectations.**

**We deliver Pre-engineered buildings, solutions and services that are optimum to meet our customer’s requirements. ”**



## About us



**North West Engineering LLC** was established in 1994 in the Sultanate of Oman. We have been accredited with ISO 9001:2008 for Design, Manufacture and Erection of Pre-engineered Steel buildings, Profile sheets, "Z" Purlins and other related PEB accessories.

The manufacturing facility is spread over an area of 20,000 m<sup>2</sup> and located at Road #15, Rusayl Industrial Estate, Sultanate of Oman.

We have a technical collaboration with MBS (Metal Building System), Tekla (X steel) and Loseke Technologies (USA) and are licensed to use the PEB frame design and plotting modules to produce economical PEB buildings.

"We Provide Solutions" for Pre-engineered Steel Structure Buildings used for factories, ware-houses, workshops, exhibition centres, showrooms, aircraft hangars, shopping malls, sports hall, labour camps, super markets, cold stores, office buildings, multi-storied buildings, car parking sheds and any other special steel structure buildings.

North West specializes in Pre-Engineered Metal Building Systems from design till Erection through Planning, Engineering, Fabrication and Erection. Design & Detailing work is carried out by a highly skilled engineering team having rich experience and expertise exclusively in metal buildings. We use fully optimized technology, maintaining top quality. Our design team has excellent computer aided design & drafting facilities with internationally recognized design standards and specifications of PEB.

North West with its full fledged infrastructure facilities strives for excellence in providing cost effective Pre-Engineered Steel Buildings.

***"Committed to customer satisfaction"***





## Facilities



The North West manufacturing plant is located at Rusayl Industrial Estate, Sultanate of Oman. The built up area of plant is spread over an area of 17,000 m<sup>2</sup>. It is equipped with the latest state-of-the-art CNC machinery & equipment line having a high degree of automation for producing top quality Pre-Engineered Steel Buildings.

Ample production capacity with optimum inventory management & CNC machinery allows us to meet customer requirements, promptly.

North west delivers service which is consistent throughout the network of relationships, right from commencement of a project until final delivery.

Calibration of all testing & measuring instruments are done periodically to ensure top quality PEB.



CNC Plasma Cutting Machine



Submerged Arc Welding Machine



CNC Punching & Drilling Machine



CNC Beam Drilling & Cutting Machine



## Facilities



At North West, Primary, Secondary & Profile sheet of PEB is manufactured in-house using latest technology that is second to none in the industry. This fully integrated manufacturing process allows management to monitor every step of production while our commitment to state-of-the-art equipments reduces costs and improves quality. Adequate manufacturing capability exists to meet the requirement of our customers, now and in future.

By combining the best technology and the best manufacturing practices under one roof, North West creates PEB that exceeds our client's expectations.

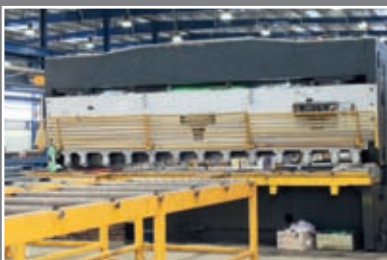


Plate shearing Machine



Plate Punching and shearing Machine



Shot Blasting Machine



Painting Booth



# Profile sheet & Secondary Members



## ROOF & WALL PANELS:

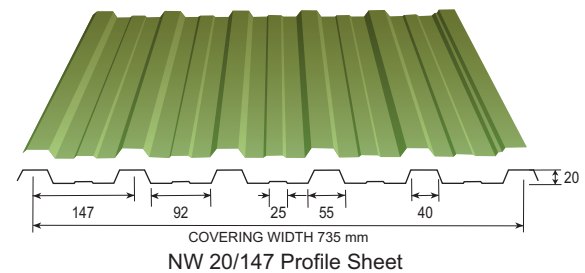
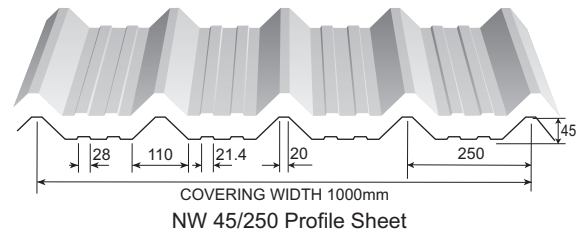
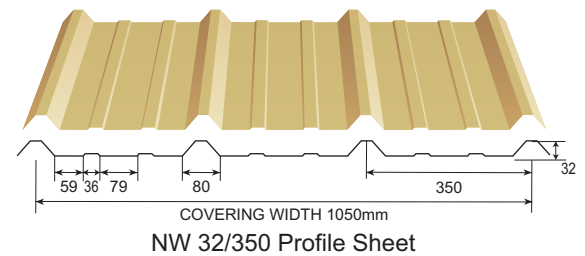
The pre-painted roof and wall panels shall be of 26 gauge / 24 gauge steel roll-formed sheets.

The steel shall have a minimum yield strength of  $29\text{kN/cm}^2$  and shall conform to ASTM 653.

Zinc coating on steel is achieved by continuous hot-dip galvanization that equals or exceeds ASTM A 527 standard.

Exterior surface shall be precision polyester coated type top finish with dry film thickness of  $25 (\pm 5 \text{ microns})$ . The reverse side shall be of grey/ white colour with 5 microns of dry film thickness.

North West profile sheets are available in 3 different profile sections and a variety of colour options to choose from.



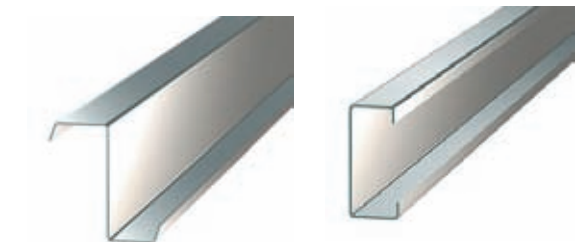
## SANDWICH / COMPOSITE PANEL:

Polyurethane injected composite panels available in various thickness and density.

## 'Z' & 'C' PROFILE PURLINS & GIRTS:

Purlins / Girts are made of galvanized steel conforming to ASTM A 653 Grade 50.

Zinc coating on steel is achieved through a process of continuous hot dip galvanizing that equals 275 gsm class G90. It has a minimum yield strength  $F_y$  of  $345\text{N/mm}^2$ .



Profile Roll Forming Machine



C & Z Profile Machine



Profile Roll Forming Machine

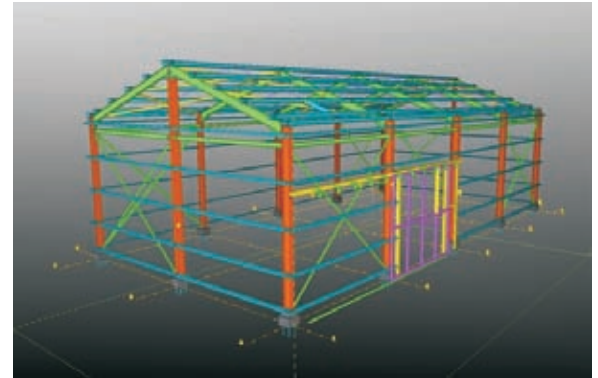


CNC Folding Machine

## Design Facilities



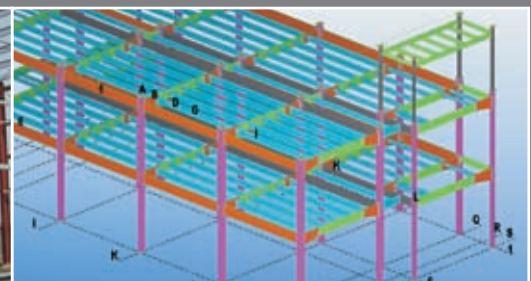
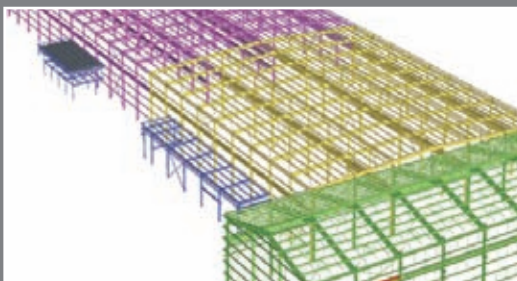
- The North West Design and Engineering department has a team of highly qualified and trained engineers, designers, detailers & checkers.
- North West has a technical collaboration with MBS (Metal Building Software), Tekla (X steel) and Loseke-Precision Plus, USA to produce economical buildings.
- Design / Load codes:  
Latest codes of AISC, BS 5950 and MBMA are used.
- MBMA is an acronym for Metal Building Manufacturer's Association. It is globally recognized and accepted standard for the design and manufacture of Pre-engineered steel buildings.



**TEKLA**



Loseke Technologies, Inc.  
*Serving the industry's software needs.*



# PEB Vs Conventional Steel Buildings



## Pre-Engineered Buildings (PEB)

## Conventional Steel Buildings

### Construction time

Construction time is lesser by 1/3rd due to Pre-engineered fabrication and ease of assembly.

Longer construction time due to site-fabricated components and use of non-standardized materials

### Structure weight

Pre-engineered buildings are 30% lighter through the optimum design & use of steel. Members are tapered built-up plate sections with larger depths in the area of highest stress.

Primary steel members are selected from standard hot rolled 'I' sections, which is heavier than what is actually required by design.

### Quality

Superior quality due to shop fabrications with stringent quality control practices and excellent surface finish applications at plant.

Average quality due to site fabrication using sub-standard manufacturing equipment and practices in an uncontrolled environment.

### Future expansion

PEBs are designed with future expansion in mind. It is easy and cost effective.

Future expansion would be difficult and more likely, costlier.

### Flexibility/Changes

Easy to re-locate and dismantle as all connections are nut-bolted.

Changes are not feasible because of welded connections.

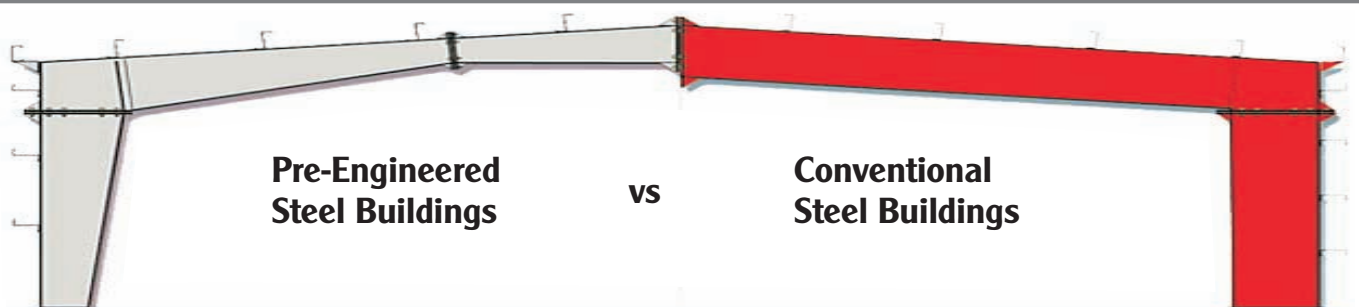
### Performance

All components are designed specifically to act together as a system for maximum efficiency, precise fit and peak performance at site.

Components are custom designed for a specific job. Design and detailing errors are possible.

## Advantages of Pre-engineered Buildings

- Low cost
- Aesthetic & modern appearance
- Larger clear span at affordable prices
- Water tight roofs
- Low cost maintenance
- Extensive choice of layout
- Ease of future expansion



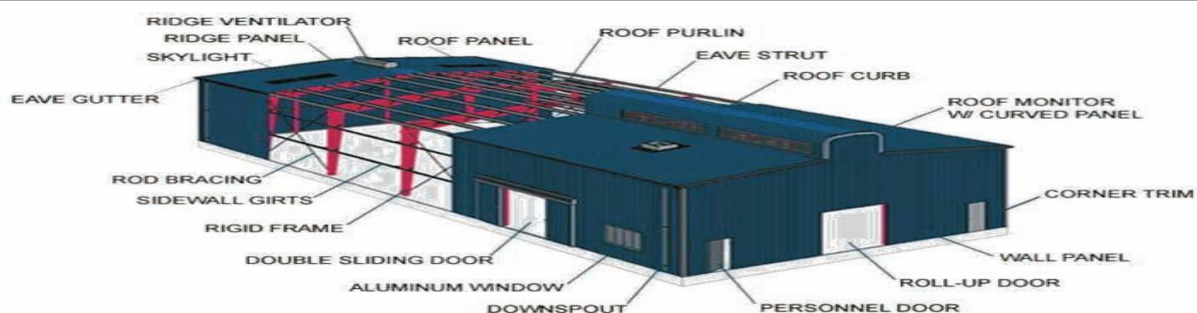
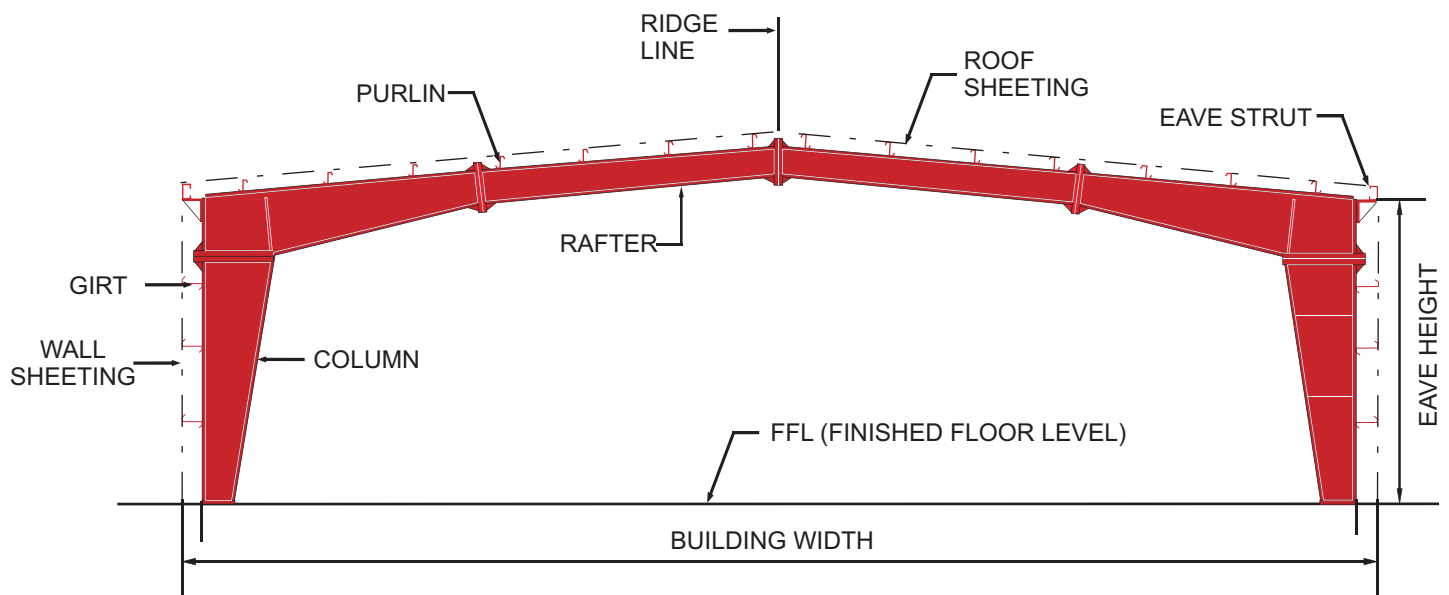
# Pre-engineered Buildings:



North West Engineering's steel buildings are computer designed and completely pre-engineered at factory to give the customer, finest pre-engineered steel buildings.

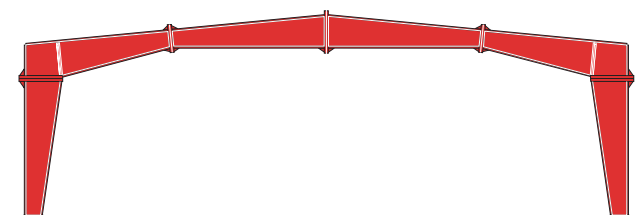
The conventional steel buildings cannot compete with cost efficiency of pre-engineered buildings. All components are computer designed to ensure on-site erection at fastest speed and least expenses.

Pre-engineered steel buildings are a combination of built-up (Plates) section, hot rolled section, cold formed section, single skin sheeting and "Z" purlins. Structural accessories include Mezzanine floors, Crane systems, Canopies, Fascia and Stair-case etc.

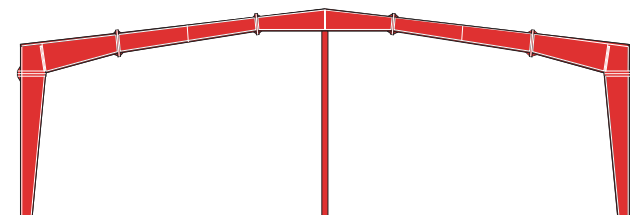




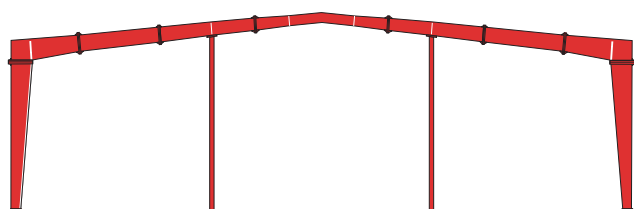
# PEB Frames



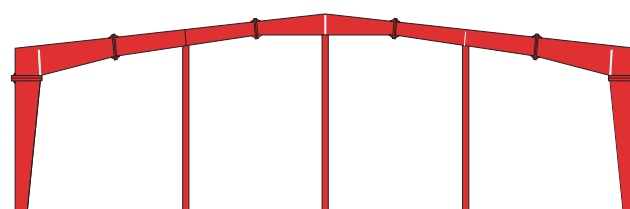
Clear Span  
(Economical span 16m to 36m)



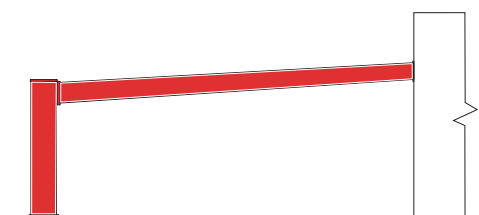
Multi-Span- I  
(Economical span 24m to 60m)



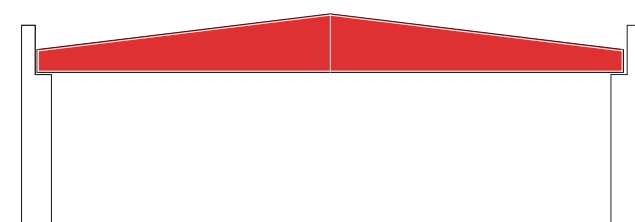
Multi Span- II  
(Economical span 36m to 72m)



Multi-Span- III  
(Economical span 48m to 96m)



Lean to Frame  
(Economical span 10m to 18m)

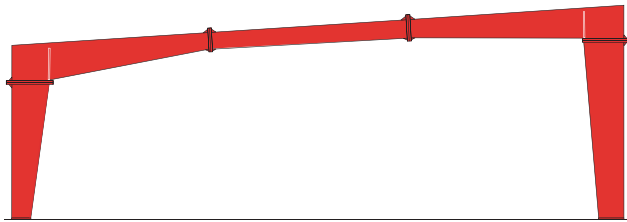


Rafter system  
(Economical span 12m to 25m)

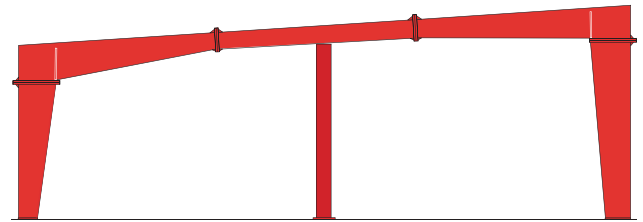




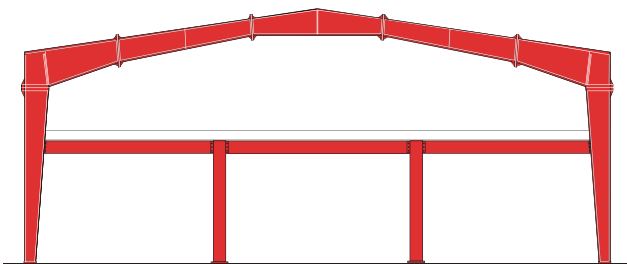
# PEB Frames



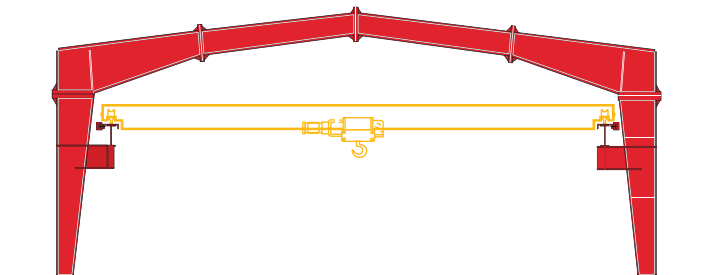
Clear Span Single Slope  
(Economical span 6m to 18m)



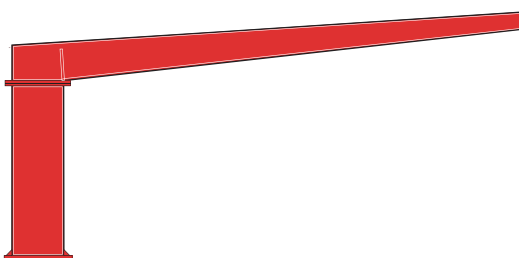
Multi-Span Single Slope with two spans  
(Economical span 24m to 36m)



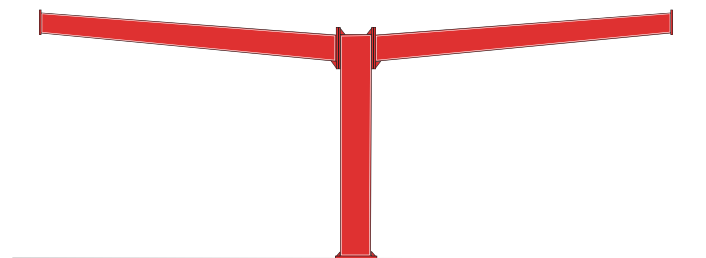
Typical frame with mezzanine



EOT crane with clear span



Single slope- canopy



'T' (Butterfly) - Canopy



## PEB Accessories



### ➤ Sliding Door ( Single & Double Leaf ):

Easy operating top hung bottom guided. Maintenance free door panels will match building panels. Provision for locking from inside & outside.



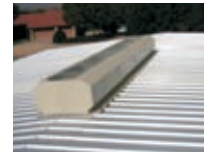
### ➤ Louvers:

Louvers shall be made up of steel and Aluminum fixed type supplied with accessories and available in standard sizes & colour matching with building wall sheets.



### ➤ Ridge-Ventilators:

Ridge ventilators are provided at the ridge for ventilation system. The size and quantity depends upon the application of Building.



### ➤ Fasteners:

Standard fasteners from internationally reputed companies are used.



### ➤ Butyl Sealant Tape & Silicon Sealant tube:

Standard products from internationally reputed companies are used.

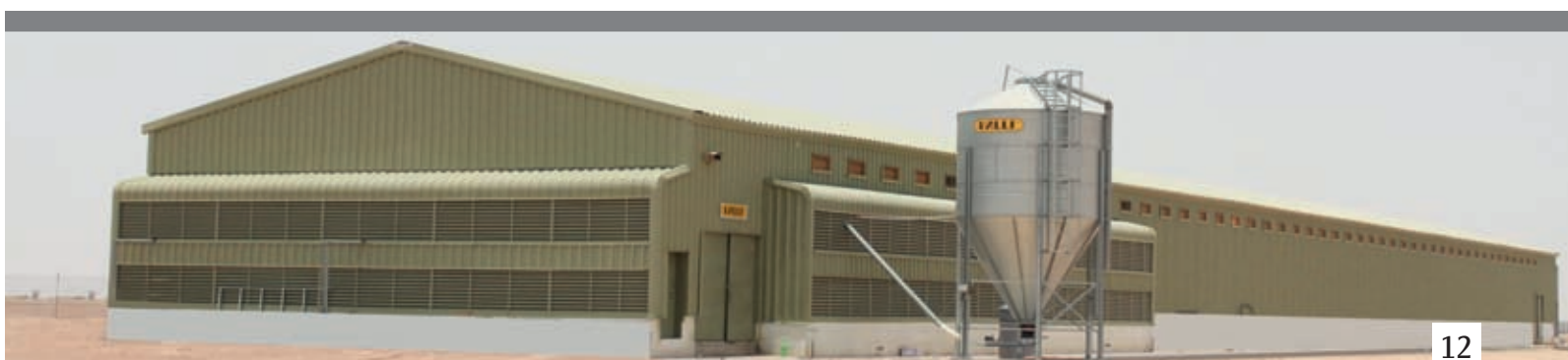


### ➤ Filler Block

Sealing all roofing / cladding profiles against water / water vapours ingress. Roof light fillers. Eaves and ridge fillers.



## Projects - Factory, Warehouse & Stores

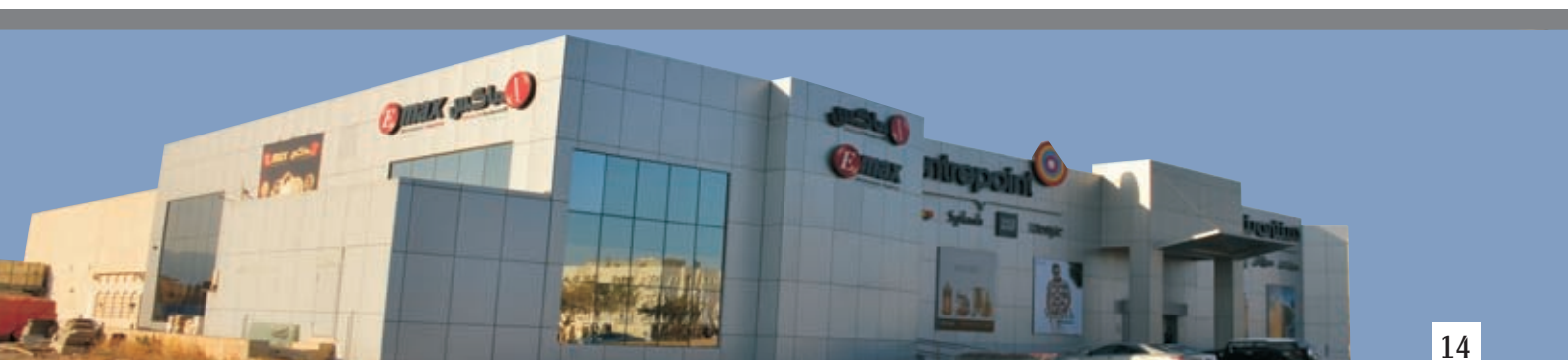




## Projects - Factory & Workshop Buildings

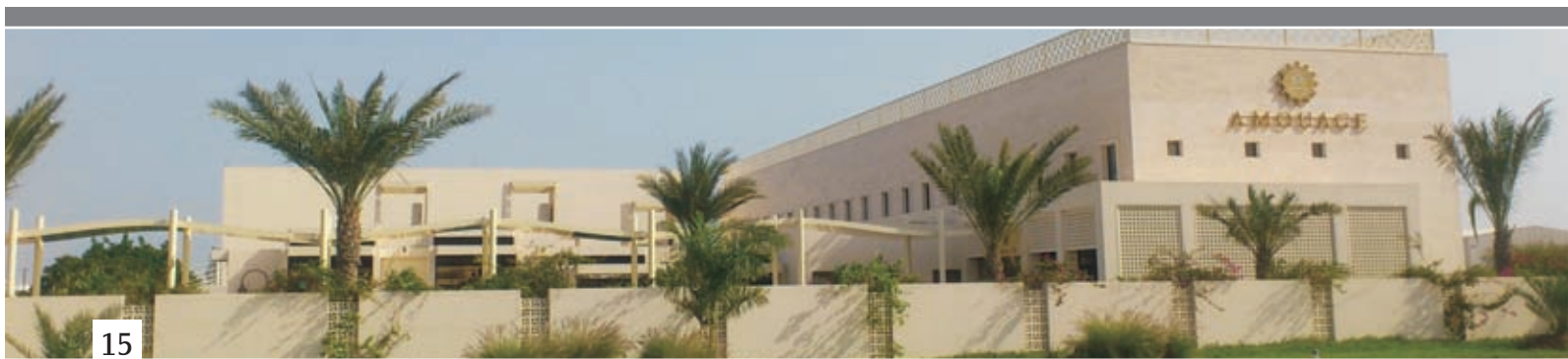
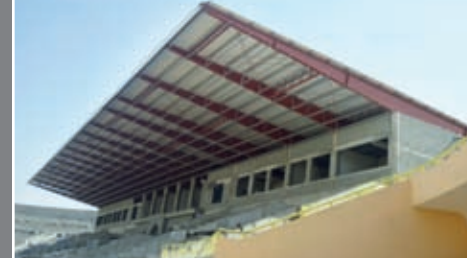


## Projects - Commercial Buildings





## Projects - Multi-storied Buildings & Warehouses





## Projects - Warehouses & Factories



# Quality & Reliability



North West is accredited to major internationally recognized Pre-Engineered steel structural building standards thereby guaranteeing top quality Pre-engineered steel structural buildings and exceeding customer expectations.



- An ISO 9001:2008 Certified Pre-Engineered Steel Building Company
- HSE Policies in place • Quality Assurance • Exceeding Customer Expectations

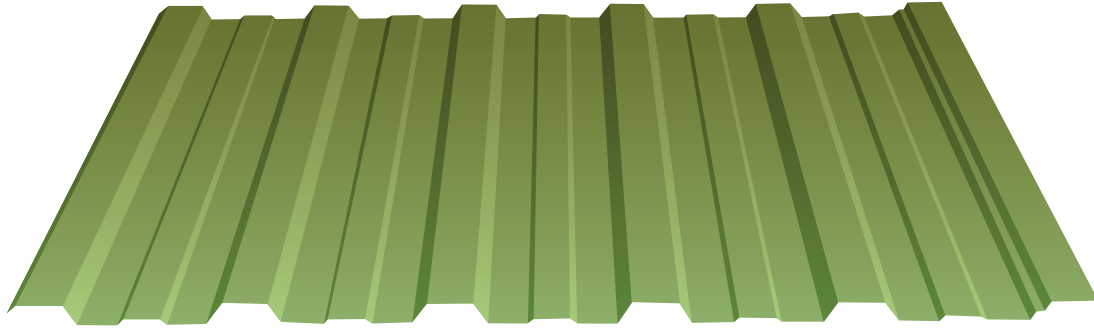
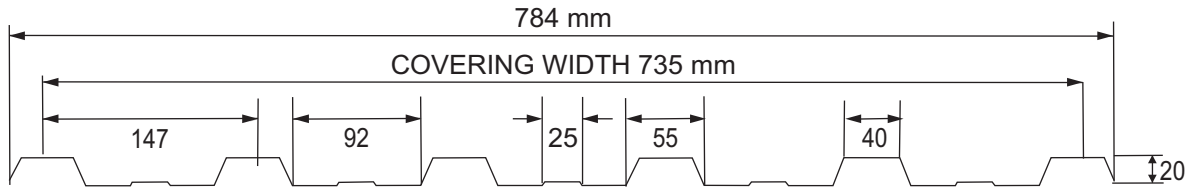
## Our Customers



- Transparency • Trust and Reputation • Client Oriented
- Effective Project Management • Infrastructure, Systems & Skilled Manpower



## STEEL NW 20/147 PROFILE SHEET



Panel Thickness (Gauge)	Area (Cm <sup>2</sup> )	Weight (Kg/m <sup>2</sup> )	Inertia (cm <sup>4</sup> )	Z-Top (cm <sup>3</sup> )	Z-Bottom (cm <sup>3</sup> )	Maximum Moment	
						Top (Kn.m)	Bottom (Kn.m)
28	3.2500	2.5980	1.9606	1.771	2.825	0.2101	0.2741
26	4.1766	3.2130	2.5205	2.265	3.605	0.3025	0.3551
24	5.1041	3.9256	3.0802	2.758	4.375	0.4058	0.4482

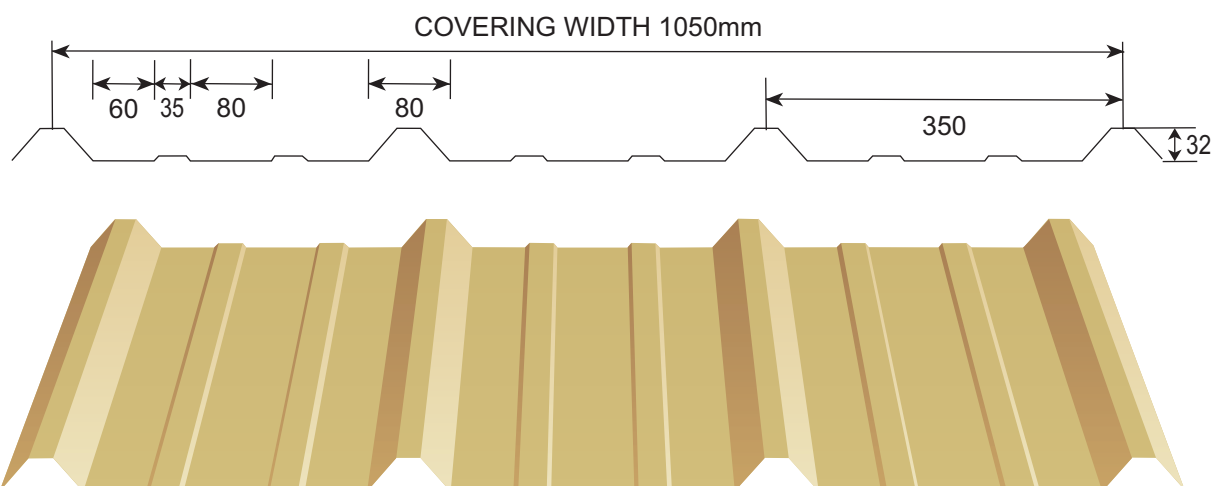
Panel Thickness (Gauge)	Weight Kg/m <sup>2</sup>	Span Condition	Purlin Spacing C/C in Meter					
			1.00	1.25	1.50	1.75	2.00	2.25
			Allowable Working Loads (Kn/m <sup>2</sup> )					
28	2.598	ONE	5.1296	3.5622	2.2798	1.5320	1.2824	1.0598
		TWO	5.6960	3.9500	2.5331	1.7591	1.4249	1.1776
		THREE	6.1555	4.2746	2.7380	1.8998	1.5389	1.2718
26	3.213	ONE	6.1099	4.2430	2.7155	1.8858	1.5275	1.2624
		TWO	6.7887	4.7144	3.0172	2.0953	1.6972	1.4026
		THREE	7.3318	5.0916	3.2586	2.2629	1.8300	1.5148
24	3.926	ONE	7.8693	5.4650	3.4970	2.4289	1.9674	1.6259
		TWO	8.7436	6.0720	3.8860	2.6980	2.1860	1.8065
		THREE	9.4434	6.5580	4.1970	2.9140	2.3609	1.9511

### Technical Specifications:

- The pre-painted roof and wall panels shall be 26 Gauge/24 Gauge Zinc Galvanized steel roll formed sheets.
- The steel shall have a minimum yield strength of 29 KN/cm<sup>2</sup> and confirm to ASTM A 653.
- The Zinc coating is achieved through a continuous hot dip galvanizing process that equals to or exceeds as per ASTM A 527.
- Exterior surface shall be precision coated with baked enamel polyester coated type finish to dry film thickness 25 (±5 microns). The reverse side shall be Grey/White with 5 microns film thickness.
- North West Ribs is available in different colors.



## STEEL NW 32/350 PROFILE SHEET



Panel Thickness (Gauge)	Area (Cm <sup>2</sup> )	Weight (Kg/m <sup>2</sup> )	Inertia (cm <sup>4</sup> )	Z-Top (cm <sup>3</sup> )	Z-Bottom (cm <sup>3</sup> )	Maximum Moment		
						Top (Kn.m)	Bottom (Kn.m)	
26	5.00	4.29	5.86	1.59	5.20	0.34	0.39	
24	6.06	5.17	6.87	2.21	7.13	0.46	0.52	
22	7.68	6.31	8.93	2.86	10.04	0.61	0.68	
Panel Thickness (Gauge)	Weight Kg/m <sup>2</sup>	Span Condition	Purlin Spacing C/C in Meter					
			1.00	1.25	1.50	1.75	2.00	2.25
			Allowable Working Loads (Kn/m <sup>2</sup> )					
26	4.29	ONE	2.56	1.64	1.14	0.79	0.54	0.35
		TWO	2.56	1.65	1.18	0.87	0.66	0.52
		THREE	3.30	2.06	1.44	1.07	0.83	0.60
24	5.17	ONE	3.52	2.25	1.56	1.10	0.62	0.47
		TWO	3.54	2.30	1.64	1.21	0.92	0.73
		THREE	4.60	2.88	2.00	1.48	1.15	0.80
22	6.31	ONE	4.72	3.02	1.85	1.20	0.83	0.60
		TWO	4.60	3.00	2.14	1.80	1.20	0.95
		THREE	6.00	3.75	2.61	1.94	1.50	1.07

### Technical Specifications:

- The pre-painted roof and wall panels shall be 26 Gauge/24 Gauge Zinc Galvanized steel roll formed sheets.
- The steel shall have a minimum yield strength of 29 KN/cm<sup>2</sup> and confirm to ASTM A 653.
- The Zinc coating is achieved through a continuous hot dip galvanizing process that equals to or exceeds as per ASTM A 527.
- Exterior surface shall be precision coated with baked enamel polyester coated type finish to dry film thickness 25 (±5 microns). The reverse side shall be Grey/White with 5 microns film thickness.
- North West Ribs is available in different colors.

## NORTH WEST ENGINEERING WORKS L.L.C.

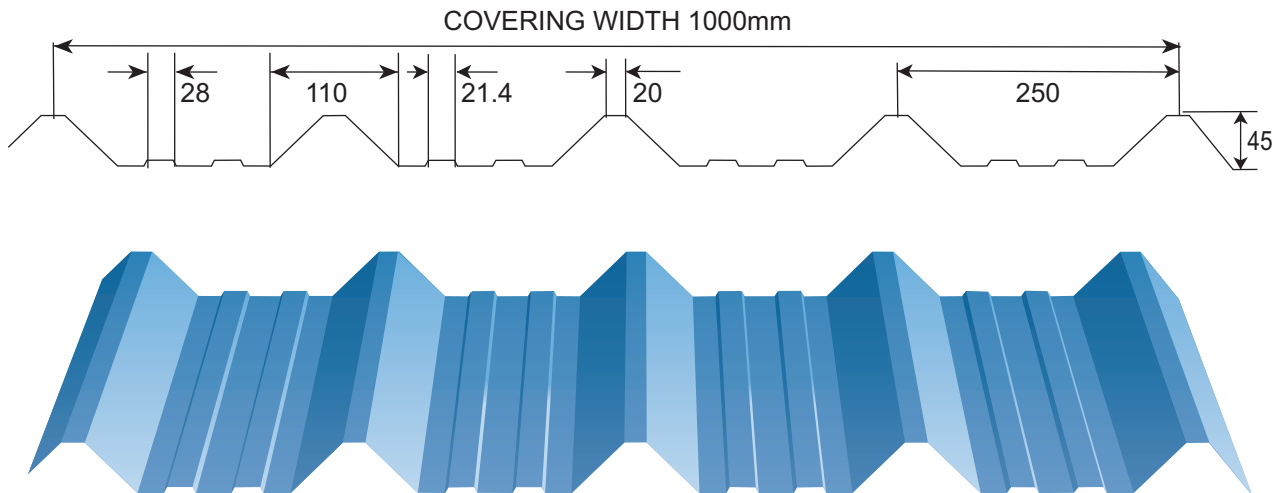
(An ISO 9001 - 2008 Certified Company)

P.O. Box: 123, Postal Code: 124, Road No. 15, Rusayl Industrial Estate, Sultanate of Oman.

Tel.: +968-2444 6692, Fax: +968-2444 6693, E-mail: info@nwewllc.com



## STEEL NW 45/250 PROFILE SHEET



Panel Thickness (Gauge)	Area (Cm <sup>2</sup> )	Weight (Kg/m <sup>2</sup> )	Inertia (cm <sup>4</sup> )	Z-Top (cm <sup>3</sup> )	Z-Bottom (cm <sup>3</sup> )	Maximum Moment		
						Top (Kn.m)	Bottom (Kn.m)	
26	5.37	4.40	7.41	3.92	9.63	0.76	0.91	
24	6.51	5.30	8.92	4.99	11.76	0.98	1.18	
22	8.25	6.70	12.7	6.45	13.94	1.28	1.53	
Panel Thickness (Gauge)	Weight Kg/m <sup>2</sup>	Span Condition	Purlin Spacing C/C in Meter					
			1.00	1.25	1.50	1.75	2.00	2.25
			Allowable Working Loads (Kn/m <sup>2</sup> )					
26	4.40	ONE	6.08	3.89	2.70	1.99	1.31	0.93
		TWO	6.64	4.25	2.95	2.17	1.66	1.31
		THREE	8.30	5.31	3.69	2.17	2.08	1.64
24	5.30	ONE	7.92	5.07	3.52	2.59	1.68	1.18
		TWO	8.64	5.53	3.84	2.82	2.16	1.71
		THREE	10.80	6.91	4.80	3.53	2.70	2.13
22	6.70	ONE	10.40	6.66	4.62	3.40	2.23	1.57
		TWO	10.96	7.01	4.87	3.58	2.74	2.16
		THREE	13.70	8.77	6.09	4.47	3.43	2.71

### Technical Specifications:

- The pre-painted roof and wall panels shall be 26 Gauge/24 Gauge Zinc Galvanized steel roll formed sheets.
- The steel shall have a minimum yield strength of 29 KN/cm<sup>2</sup> and confirm to ASTM A 653.
- The Zinc coating is achieved through a continuous hot dip galvanizing process that equals to or exceeds as per ASTM A 527.
- Exterior surface shall be precision coated with baked enamel polyester coated type finish to dry film thickness 25 (±5 microns). The reverse side shall be Grey/White with 5 microns film thickness.
- North West Ribs is available in different colors.

## NORTH WEST ENGINEERING WORKS L.L.C.

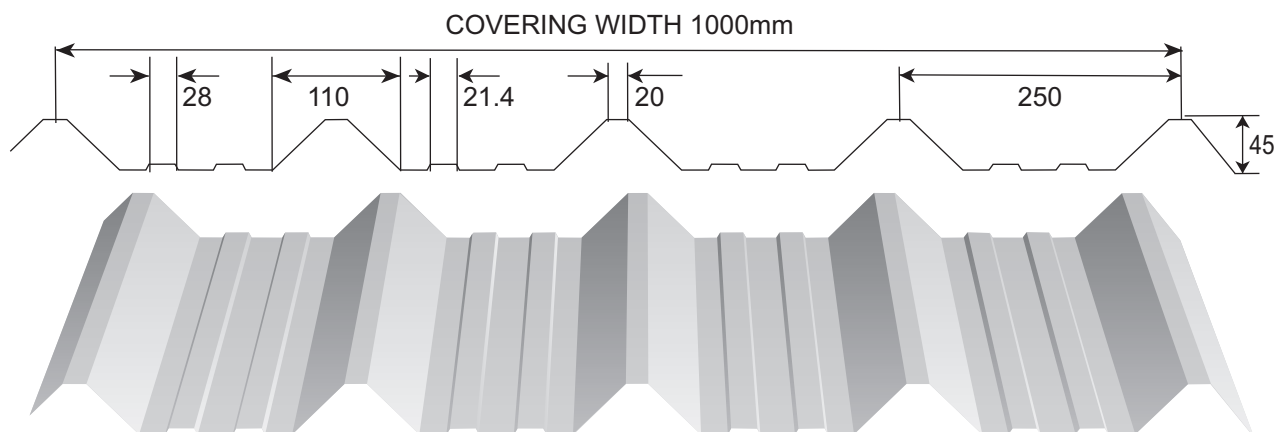
(An ISO 9001 - 2008 Certified Company)

P.O. Box: 123, Postal Code: 124, Road No. 15, Rusayl Industrial Estate, Sultanate of Oman.

Tel.: +968-2444 6692, Fax: +968-2444 6693, E-mail: info@nwewllc.com



## ALUMINIUM NW 45/250 PROFILE SHEET



Panel Thickness (mm)	Weight (Kg/m <sup>2</sup> )	Moment of Inertia (cm <sup>4</sup> )	Section Modulus (cm <sup>3</sup> )	Ultimate positive moment of resistance (Kn-m)	Maximum Recommended sheet length (m)
0.5	1.83	7.52	2.21	0.38	8
0.6	2.20	10.1	3.06	0.52	8
0.7	2.31	12.7	3.90	0.66	10

Panel Thickness (mm)	Weight Kg/m <sup>2</sup>	Span Condition	Purlin Spacing C/C in Meter					
			1.00	1.25	1.50	1.75	2.00	2.25
			Allowable Working Loads (Kn/m <sup>2</sup> )					
0.5	1.83	ONE	5.30	2.17	1.05	0.56	0.32	0.21
		TWO	8.30	4.60	1.75	1.00	0.90	0.70
		THREE	9.39	5.12	2.96	1.86	1.25	0.88
0.6	2.2	ONE	6.56	2.60	1.26	0.68	0.40	0.25
		TWO	9.50	5.10	2.20	1.75	0.90	0.60
		THREE	11.50	6.14	3.55	2.24	1.50	1.05
0.7	2.31	ONE	7.42	3.04	1.46	0.80	0.50	0.30
		TWO	9.50	5.01	3.00	1.50	1.00	0.80
		THREE	13.35	7.16	4.20	2.61	1.75	1.23

**This Profile can be produced in any of the following technical specifications:**

Thickness : 0.5mm To 0.7mm

Coating : Polyester coating 20 to 25 microns on weather side,  
Epoxy primer 5 microns on reverse side. Other coatings available on request.

Colours : See separate colour chart from raw material supplier.

Material Specifications : See separate brochure from raw material supplier.

Calculations are based on AISI and on a limiting stress 170 N/mm<sup>2</sup>

Thickness refers to overall thickness.

The recommended maximum length is based on ease of handling on site and erection.

NW produces any length that may be required.

Such details are indicative of products available and shall not replace agreed offers and specifications.

NW reserves the right to amend the above details at any time without notification.

# NORTH WEST ENGINEERING WORKS L.L.C.

(An ISO 9001 - 2008 Certified Company)

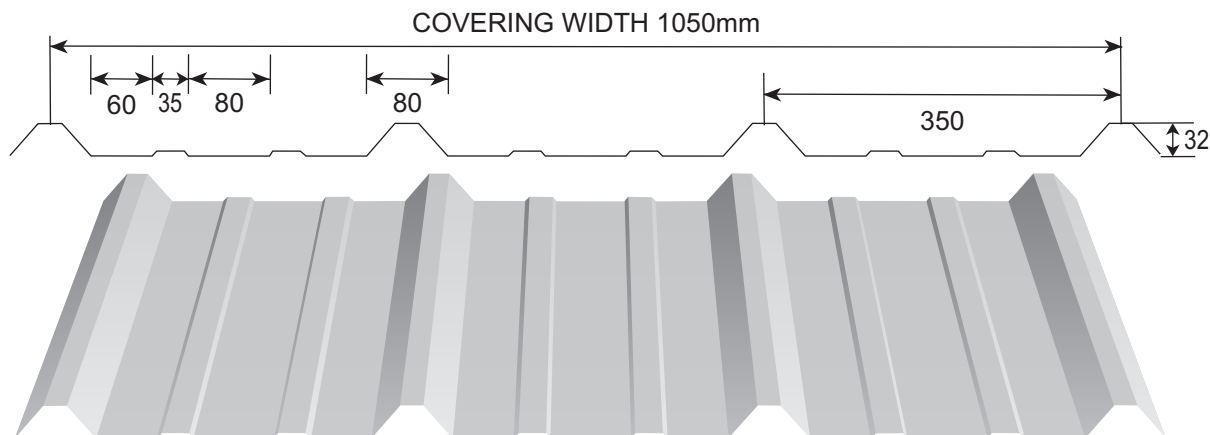
P.O. Box: 123, Postal Code: 124, Road No. 15, Rusayl Industrial Estate, Sultanate of Oman.

Tel.: +968-2444 6692, Fax: +968-2444 6693, E-mail: [info@nwewllc.com](mailto:info@nwewllc.com)





## ALUMINIUM NW 32/350 PROFILE SHEET



Panel Thickness (mm)	Weight (Kg/m <sup>2</sup> )	Moment of Inertia (cm <sup>4</sup> )	Section Modulus (cm <sup>3</sup> )	Ultimate positive moment of resistance (Kn-m)	Maximum Recommended sheet length (m)
0.5	1.67	6.14	2.37	0.29	8
0.6	1.98	7.44	2.86	0.36	8
0.7	2.27	8.93	3.47	0.39	10

Panel Thickness (mm)	Weight Kg/m <sup>2</sup>	Span Condition	Purlin Spacing C/C in Meter					
			1.00	1.25	1.50	1.75	2.00	2.25
			Allowable Working Loads (Kn/m <sup>2</sup> )					
0.5	1.67	ONE	1.61	0.82	0.48	0.30	0.20	0.14
		TWO	2.00	1.20	0.65	0.40	0.28	0.20
		THREE	2.72	1.55	0.90	0.57	0.28	0.27
0.6	1.98	ONE	1.93	0.99	0.57	0.26	0.24	0.17
		TWO	2.50	1.30	0.80	0.45	0.32	0.21
		THREE	3.26	1.56	1.08	0.68	0.45	0.32
0.7	2.27	ONE	2.25	1.15	0.67	0.42	0.28	0.20
		TWO	2.90	1.75	0.75	0.62	0.38	0.28
		THREE	3.80	2.17	1.26	0.79	0.53	0.37

### This Profile can be produced in any of the following technical specifications:

Thickness : 0.5mm To 0.7mm  
 Coating : Polyester coating 20 to 25 microns on weather side,  
 Epoxy primer 5 microns on reverse side. Other coatings available on request.  
 Colours : See separate colour chart from raw material supplier.  
 Material Specifications : See separate brochure from raw material supplier.

Calculations are based on AISI and on a limiting stress 170 N/mm<sup>2</sup>

Thickness refers to overall thickness.

The recommended maximum length is based on ease of handling on site and erection.

NW produces any length that may be required.

Such details are indicative of products available and shall not replace agreed offers and specifications.

NW reserves the right to amend the above details at any time without notification.

## NORTH WEST ENGINEERING WORKS L.L.C.

(An ISO 9001 - 2008 Certified Company)

P.O. Box: 123, Postal Code: 124, Road No. 15, Rusayl Industrial Estate, Sultanate of Oman.

Tel.: +968-2444 6692, Fax: +968-2444 6693, E-mail: [info@nwewllc.com](mailto:info@nwewllc.com)



## PRODUCT DATA SHEET OF 'Z' PURLIN

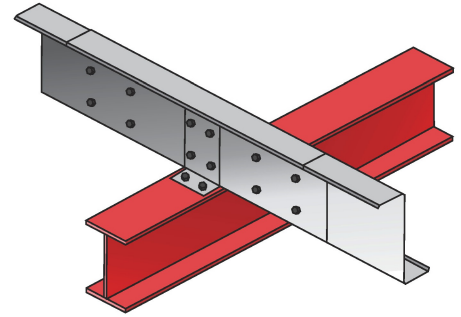
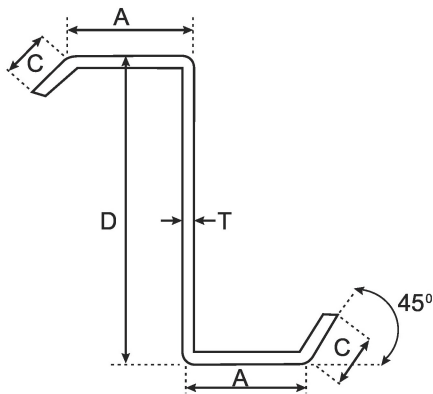


TABLE OF PROPERTIES FOR Z SECTION

Section	General Properties					Section Properties								
	Weight (Kg/m)	D (mm)	A (mm)	C (mm)	T (mm)	Ix defl (cm <sup>4</sup> )	Sx (T) (cm <sup>4</sup> )	Sx (B) (cm <sup>3</sup> )	Sxe (T) (cm <sup>3</sup> )	Sxe (B) (cm <sup>3</sup> )	Rx (cm)	Ly (cm <sup>4</sup> )	Sy (cm <sup>3</sup> )	Ry (cm)
Z 150 15	2.84	150	40	12	1.5	128.900	18.480	17.830	17.203	17.600	5.585	33.650	5.010	2.854
Z 180 15	3.55	180	50	17	1.5	223.700	24.980	24.190	22.110	23.490	6.965	28.740	4.460	2.497
Z 202 15	3.92	202	60	12	1.5	301.700	30.320	29.440	26.290	28.410	7.721	35.860	5.160	2.662
Z 202 20	5.22	202	60	14	2.0	397.700	39.960	38.800	37.490	38.250	7.695	46.910	6.770	2.643
Z 202 25	6.53	202	60	16	2.5	491.400	49.380	47.940	48.050	47.670	7.670	57.510	8.330	2.624
Z 252 18	5.7	252	66	16	1.8	666.800	53.580	52.290	46.120	50.240	9.547	63.440	7.990	2.945
Z 252 20	6.34	252	66	18	2.0	738.100	59.310	57.870	50.940	55.570	9.537	70.020	8.830	2.937
Z 252 25	7.92	252	66	20	2.5	913.900	73.430	71.660	68.630	70.470	9.511	86.060	10.880	2.918
Z 302 20	7.36	302	75	17	2.0	1283.800	85.950	84.170	64.840	79.330	11.473	117.370	12.440	3.469
Z 302 25	9.2	302	75	19	2.5	1592.200	106.530	104.380	87.610	98.900	11.447	144.640	15.370	3.450

- Minimum Specified Yield Stress  $F_y = 345 \text{ N/mm}^2$
- Material: Galvanized (GI) Grade SQ-50 ASTM A653M.
- Coating/Finish: G90 (275 grms/m<sup>2</sup> Zinc Coating).
- Material Thickness is 1.5 to 3.0mm.
- Dimensions: Span up to 11.0 Meters & Depth is 100 to 350 mm.
- Section Properties are Calculated in accordance with the 2001 Edition of the American Iron and Steel Institute "Specifications" (A.I.S.I.).
- Top Flange is Fully braced & Bottom Flange is Fully un braced.
- Such Details are indicative of products available and shall not replace agreed offers and specifications.
- Allowable Loads are applicable for 2or more bays and up to roof slopes of 3:10 only.  
Allowable capacities for uplift loads are increased by 33.33 % as per AISI 3.
- NW reserves the right to amend the above details at any time without notification.

**NORTH WEST ENGINEERING WORKS L.L.C.**

(An ISO 9001 - 2008 Certified Company)

P.O. Box: 123, Postal Code: 124, Road No. 15, Rusayl Industrial Estate, Sultanate of Oman.

Tel.: +968-2444 6692, Fax: +968-2444 6693, E-mail: info@nwewllc.com





***Executed more than 2000 PEB Buildings***

**[www.nwewllc.com](http://www.nwewllc.com)**



**An ISO 9001:2008 certified  
Pre-Engineered Steel Building Company**



**Reliability • Quality • Professional Service**



**North West Engineering Works L.L.C.**

P.O. Box: 123, Postal Code: 124,  
Road No. 15, Rusayl Industrial Estate, Sultanate of Oman.  
Tel: +968-2444 6692, 2444 6940 | Fax: +968-2444 6693  
E-mail: [info@nwewllc.com](mailto:info@nwewllc.com)





## **COMPANY PROFILE**



**NORTH WEST**  
STEELBUILDING



Design, Manufacturer & Erection of :

- ◆ Pre-Engineered Steel Buildings
- ◆ Z-Purlines
- ◆ Profile sheets
- ◆ Accessories

**PEB**  
PRE-ENGINEERED STEEL BUILDING

We Provide  
**Solutions**



 [www.nnewllc.com](http://www.nnewllc.com)

**North West Engineering Works L.L.C**

AN ISO 9001:2008 CERTIFIED PRE-ENGINEERED STEEL BUILDING COMPANY



**North West Engineering Works LLC** was established in **1994** in the Sultanate of Oman. We have been accredited with **ISO 9001:2008** in respect of Design, Manufacture and Erection of **Pre-engineered steel building, Profiled sheets, "Z" purlin** and other related accessories.

The manufacturing facility is spread over 20,000 m<sup>2</sup> area and located at Road 15, Rusayl Industrial Estate, Sultanate of Oman.

We have a technical collaboration with **MBS** (Metal Building system) and **Loseke Technologies, USA** and are licensed to use the general frame design and plotting modules.

**"We Provide solution"** for Pre-engineered Steel Structure buildings used as factory buildings, ware-houses, workshops, exhibition centres, showrooms, aircraft hangers, shopping mall, sports hall, labour camps, super markets, cold stores, office buildings, car parking sheds and any special steel structure buildings.

**Factory Entrance View**



**Google Map View**



Loseke Technologies, Inc.  
Serving the industry's software needs.



**TEKLA®**





## “Committed to Customer Satisfaction”

Our vision is to provide most professional services in Engineering, Production, Quality Assurance & project management of Pre-engineered Steel Buildings to assure their satisfaction.

We being local PEB company in Sultanate of Oman, continuously strive to exceed our customer's expectations. We deliver Pre-engineered buildings, solutions and services that are optimum to meet our customer requirements.

## DESIGN FACILITIES

- The NWEWLLC, Design and Engineering department has a team of well qualified and trained engineers, designers detailers & checkers.
- North West Engineering has a Technical collaboration with MBS, X-Steel and M/s. Loseke-Precision Plus, USA to produce most economical buildings.
- Design / Loads codes:

Latest codes of MBMA, AISC and BS 5950 are used.



Loseke Technologies, Inc.  
*Serving the industry's software needs.*



**TEKLA®**

Manufacturing Plant is located At Rusayal Industrial Estate, Sultanate of Oman

Spread over 20,000 m<sup>2</sup> Area.





## CNC ROLLED PROFILE FORMING MACHINES:



CNC ROLL FORMING MACHINE FOR ROOF AND WALL SHEET PROFILES

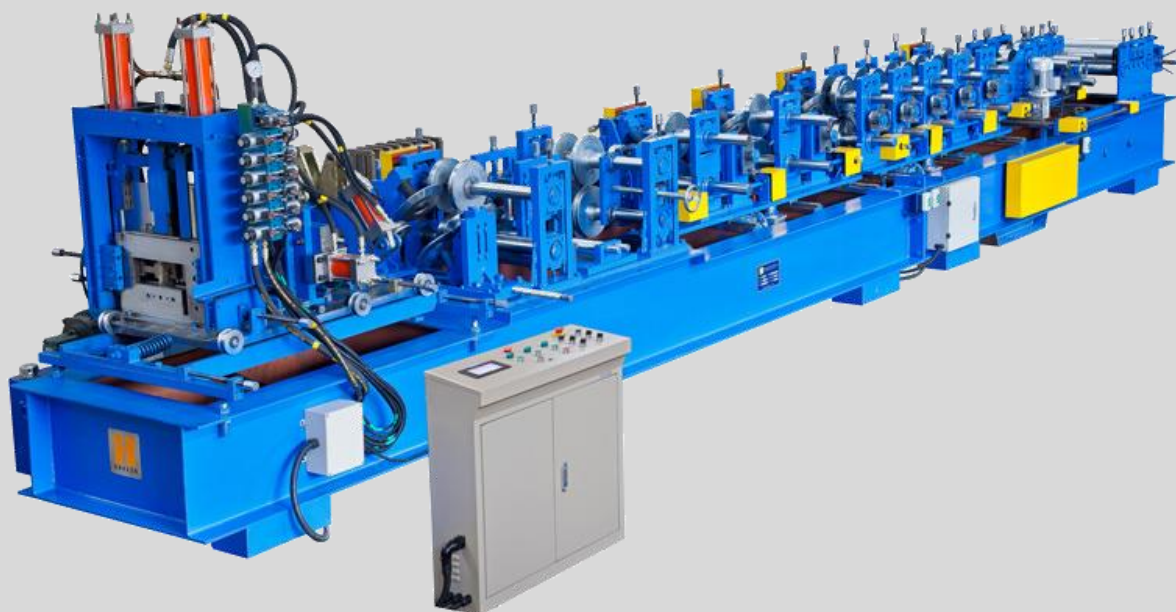


CNC FOLDING MACHINE ( 6.0 m Length ) FOR GUTTER/FLASHINGS



## PROFILE FORMING MACHINES:

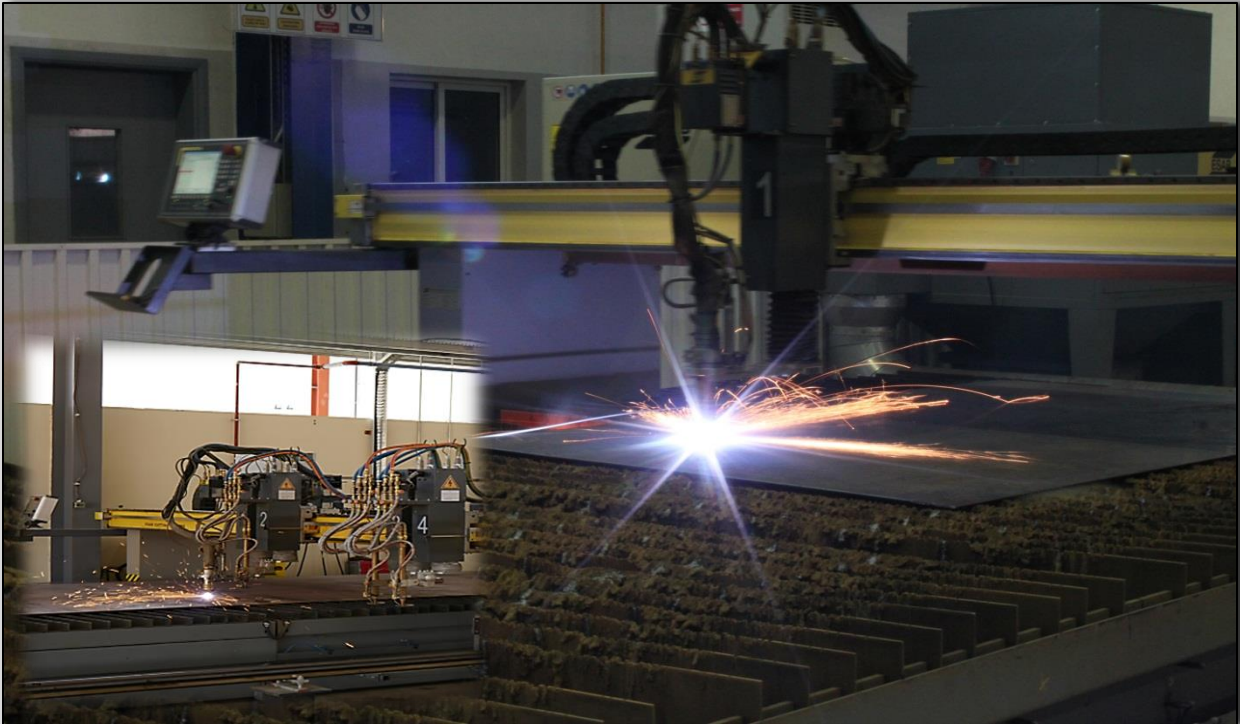
“Z” PROFILE MACHINE FOR PURLINS/GIRTS.



## CNC HYDRAULIC PRESS BRAKE MACHINE:



CNC PLATE/SHEET CUTTING MACHINES:



CNC PLASMA & OXY FUEL CUTTING MACHINE



BUILT-UP WELDING LINE:

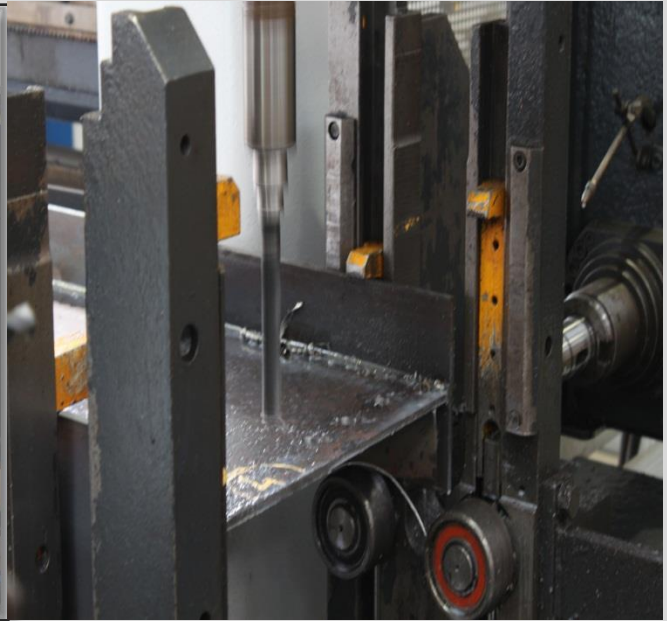


Automatic Submerged Arc Beam Welding Machine





CNC BEAM CUTTING & DRILLING MACHINE



CNC DRILLING / PUNCHING :





FABRICATION OPERATIONS:



Built-up Fit-up Fabrication



Built-up Fit-up Fabrication



CNC SHOT BLASTING/ SURFACE PREPARATION MACHINE:



## CUTTING MACHINES:



CNC SHEARING MACHINE



*Executed more than 1,200 PEB Buildings*

[www.nwewllc.com](http://www.nwewllc.com)



**Reliability ♦ Quality ♦ Professional Services**



**North West Engineering Works L.L.C**

P.O. Box: 123, Postal Code: 124  
Road No. 15, Rusayl Industrial Estate, Sultanate of Oman  
Tel.: +968 2444 6692 / 2444 6940, Fax: +968 2444 6693  
E-mail: [info@nwewllc.com](mailto:info@nwewllc.com)





## **PROJECTS PHOTOGRAPHS (EXECUTED)**



<b>Project Name</b>	: Sheds for Jotun Paints at Rusayl
<b>Consultant</b>	: Semac & Partners LLC
<b>No. of Bldgs</b>	: 10 Nos.
<b>Total Area</b>	: 15,500m <sup>2</sup>





**Project Name** : Transformer Factory at Rusayl

**Client** : Zubair Electric LLC/ Federal Transformers & Switchgears LLC

**Consultant** : Semac & Partners LLC

**Total Area** : 4,300m<sup>2</sup>





<b>Project Name</b>	: Warehouses at Salalah
<b>Client</b>	: SAGA LLC
<b>Consultant</b>	: Omani Engineering Consultancy
<b>Total Area</b>	: 40,000m <sup>2</sup>





<b>Project Name</b>	: Showroom at Al Hail
<b>Client</b>	: Teejan Furnishing LLC
<b>Consultant</b>	: Design Group Consultant (DG BIM)
<b>Total Area</b>	: 3,200m <sup>2</sup>



<b>Project Name</b>	: Warehouses at Rusayl
<b>Client</b>	: Manar Foods
<b>Consultant</b>	: Al Hatmy Engineering Consultancy
<b>Total Area</b>	: 6,500m <sup>2</sup>





## PROJECT DETAILS

**Project Name : Atyab Bakery**

**Location : Barka**



## PROJECT DETAILS

**Project Name : Fibre Glass factory**

**Location : Sohar**



## PROJECT DETAILS

Project Name : Al Ansari Headquarters

Location : Ghala





## PROJECT DETAILS

**Project Name : Nuhas Oman**

**Location : Rusyal**



## PROJECT DETAILS

Project Name : Al Seer Logistics

Location : Barka



## PROJECT DETAILS

**Project Name : Centrepoint**

**Location : Salalah**





## PROJECT DETAILS

**Project Name : Oman Oils & Derivatives Co. LLC.**

**Location : Salalah**



## PROJECT DETAILS

**Project Name : Al Seer Logistics**

**Location : Nizwa**



## PROJECT DETAILS

Project Name : Future Pipe Industries LLC.

Location : Rusayl





## PROJECT DETAILS

**Project Name : L & T Fabrication Shop**

**Location : Sohar**



## PROJECT DETAILS

**Project Name : Oman Cables**

**Location : Rusayl**





## PROJECT DETAILS

**Project Name : Haya Water**

**Location : Ghala**





## PROJECT DETAILS

Project Name : Opera House

Location : Ghala



## PROJECT DETAILS

**Project Name : Industrial Packing Co. LLC**

**Location : Salalah**



## PROJECT DETAILS

**Project Name : Al Anwar Ceramics**

**Location : Nizwa**





## PROJECT DETAILS

**Project Name : Al Seer Logistics**

**Location : Nizwa**



## PROJECT DETAILS

**Project Name : Larsen & Toubro**

**Location : Sohar**



## PROJECT DETAILS

**Project Name : Mercedes Benz Showroom**

**Location : Haima**





## PROJECT DETAILS

**Project Name : Petroleum Development Oman LLC.**

**Location : Nimr**



## PROJECT DETAILS

**Project Name : Mondi Packaging.**

**Location : Rusayl**





## PROJECT DETAILS

Project Name : Al Seer Logistics

Location : Sohar





## PROJECT DETAILS

Project Name : SAGA

Location : Salalah



## PROJECT DETAILS

**Project Name : Towell Property**

**Location : Rumais, Barka**



## PROJECT DETAILS

**Project Name : Buraimi Stadium for Ministry of Sports**

**Location : Rusayl**





## PROJECT DETAILS

**Project Name : Dhofar Cattle Feed**

**Location : Salalah**



## PROJECT DETAILS

**Project Name : Reem Carbonate**

**Location : Rusayl**



## PROJECT DETAILS

**Project Name : Areej Vegetable Oils & Derivatives**

**Location : Rusayl**





## PROJECT DETAILS

**Project Name : Sadolin Paint**

**Location : Rusayl**



## **LIST OF PROJECTS EXECUTED**

Some of the **PROJECTS EXECUTED** by North West Engineering Works LLC. In Oman

<i>Sr. No.</i>	<i>PROJECT</i>	<i>CONSULTANT</i>	<i>CLIENT</i>	<i>AMOUNT (R.O.)</i>
1	Poultry Farm for Al Zain Poultry at Sinaw	Space Designers International	Al Zain Poultry Farm LLC.	<b>3,200,000.000</b>
2	STF Complex for ROP at Ibri, Ibra, Sohar, Salil, Buraimi, Duqum, Sur, Barka & Salalah	Royal Oman Police	Al Adrak Trading & Cont. Co.	<b>3,040,600.000</b>
3	Warehouse for Oman Food at Rusayl & Salalah	Al Hatmy Engineering	Oman Food	<b>2,250,000.000</b>
4	Royal Philharmonic Orchestra - Nagamat Phase-I	Central Design Office	Royal Court Affairs	<b>1,100,000.000</b>
5	Warehouse for Oasis Logistic at Misfa	Super Shine Construction	Oasis Logistic	<b>1,050,000.000</b>
6	Industrial Bakery for Oman Flour Mill Co. at Barka	Semac & Partner LLC.	Oman Flour Mill Company (S.A.O.G.)	<b>800,000.000</b>
7	Factory for Jotun Paints at Rusayl	Semac & Partners LLC	Jotun Paints	<b>750,000.000</b>
8	Store for Royal Opera House – M. K. Const.	Consulting Engineering Services	Royal Estates, Royal Court Affairs	<b>605,000.000</b>
9	Warehouse for M/s. SAGA LLC. at Salalah (30,000 m2)	Omani Engineering Consult.	Salalah Apparel, Garments & Accessor	<b>540,000.000</b>
10	Accommodation Shed Carillion Alawi (7,000 m2)	Traid Oman Consultant	Carillion Alawi LLC	<b>505,000.000</b>
11	Al Anwar Ceramic Tiles Co. at Nizwa	Abdulla Mukadam & Partners	Al Anwar Ceramic Tiles Co. SAOG	<b>482,000.000</b>
12	Warehouse for Al Seer at Barka (15,000 m2)	Semac & Partners LLC.	Al Seer Trading, Dubai	<b>456,000.000</b>
13	Store for Qibla Int. Real Estate Co. at Misfa	Arzi Architects Engg.	Qibla Int. Real Estate Co.	<b>435,332.000</b>
14	Warehouse for Omani Integrated Logistics - Al Rawaj	Semac & Partners LLC	Omani Integrated Logistics Services	<b>422,000.000</b>
15	L&T Modular Fabrication Yard - Sohar	Abdulla Mukadam & Partners	L & T MFY L.L.C.	<b>367,000.000</b>
16	Factory for Pragathi Glass at Nizwa (13,500 m2)	Abdulla Mukadam & Partners	Pragati Glass L.L.C	<b>365,000.000</b>
17	Warehouse for Barzman National at Mawaleh	Space Designers Int. LLC.	Barzman National LLC.	<b>354,600.000</b>
18	H.Q. Bldg. Oman Wastwater "HAYA"- Al Adrak	EIDC	Oman Waste Water Services Co.	<b>352,000.000</b>
19	Gulf spacificities steel industry at Sohar - Amana Cont	Semac & Partners L.L.C.	Gulf Speciality Steel Industries	<b>352,000.000</b>
20	Cable Factory for Nuhas Oman at Rusayl	Semac & Partners LLC.	Nuhas Oman	<b>332,500.000</b>
21	Engineering facility for Oman Air - Teejan	Semac & Partners L.L.C.	Oman Air	<b>325,000.000</b>
22	Workshop for P.D.O. - A.I.	Petroleum Development Oman	Petroleum Development Of Oman	<b>305,000.000</b>
23	Multi-Storied Building for Mr. Saleh Mohd at Al Khuwair	Dar Al Handasah Engineering	Mr. Saleh Mohamed Juma	<b>300,000.000</b>
24	Warehouse for Salalah Mills Co. (S.A.O.G.) at Salalah	Creative Engineering Consultant	M/s. Salalah Mills Co. (S.A.O.G.)	<b>298,000.000</b>
25	Palm Mall for Tamani Development at Sohar - Al Rawahi	Engineering Innovation & Design	Tamani Development & Invesment Co.	<b>284,500.000</b>
26	Workshop at Sohar for Mudaher Est.	Abdulla Mukadam & Partners	Mudhaheer Industries	<b>275,000.000</b>
27	Khabourah Mall for Al Fairuz at Khabourah - Vita Engg.	Capital Engineering	Vita Engineering Co.	<b>274,000.000</b>
28	Warehouse for M.H.D. at Sohar	Triad Oman Consultant	Mohsin Haider Darwish LLC.	<b>270,000.000</b>
29	Warehouse at Salalah for Oman Pharm.	Knexir Consultants Pvt. Ltd.	Oman Pharmaceutical Products Co.	<b>250,000.000</b>



Some of the **PROJECTS EXECUTED** by North West Engineering Works LLC. In Oman

<i>Sr. No.</i>	<i>PROJECT</i>	<i>CONSULTANT</i>	<i>CLIENT</i>	<i>AMOUNT (R.O.)</i>
30	Warehouse at Barka for Omani Integrated Logistic	Semac & Partners LLC.	Omani Integrated Logistic Services	<b>250,000.000</b>
31	Extension of carton factory at suwaieq - Al Bahja	Semac & Partners LLC.	Packaging Co. Ltd. (SAOG)	<b>246,000.000</b>
32	Warehouse for Al Seer At Salalah	Semac & Partners LLC.	Al Seer Trading, Dubai	<b>225,000.000</b>
33	VIP & Public Stand Canopy	Gulf Engineering Consult.	Sultan's Special Force	<b>225,000.000</b>
34	Mercedes Benz Facility @ Haima & Sohar	Huckle and Partners L.L.C.	Mercedes Benz	<b>222,450.000</b>
35	Transformer Factory for Federal Transformers at Rusayl	Semac & Partners LLC.	Federal Transformers LLC.	<b>218,500.000</b>
36	Poultry Sheds for Bidiyah Poultry Farm LLC.	Bidiyah Poultry Farm LLC.	Bidiyah Poultry Farm LLC.	<b>210,000.000</b>
37	Fiberglass Pipe Mfg. Unit at Sohar - G.P.S.	Abdulla Mukadam & Partners	Fiberglass Systems Oman LLC.	<b>210,000.000</b>
38	Expansion of Oman Chlorine at Sohar	Abdulla Mukadam & Partners	Oman Chlorine S.A.O.G.	<b>208,900.000</b>
39	Store for Muttrah Cold Stores at Sohar	Triad Oman Consultants	Muttrah Cold Stores LLC.	<b>206,000.000</b>
40	Packaging Industry at Rusayl	Semac & Partners LLC.	Oman Packaging Co.	<b>201,000.000</b>
41	Factory For Unikai At Sohar	Abdulla Mukadam & Partners	Unikai Industries	<b>200,000.000</b>
42	Showroom at Barka - Mr. Hamdan Al Rashidy	Al Midad Al Elmi Engg.	Mr. Hamdan Al Rashidy	<b>200,000.000</b>
43	Warehouse & Workshop at Sohar for Al Fairuz	Al Fajer Engineering	Al Fairuz Trading	<b>196,000.000</b>
44	Cast House For SAG at Sohar	Semac & Partners LLC.	Teejan Trading & Cont. Co. LLC	<b>195,000.000</b>
45	Fab. Shop for L & T Modular Fab. Yard LLC. at Sohar	Abdulla Mukadam & Partners	L & T Modular Fabrication Yard	<b>195,000.000</b>
46	Warehouse (8000m2) at Al Amerat for M/s SBG	Al Hatmy Engg.	Services & Trade Co.	<b>190,000.000</b>
47	Marble Factory for Natural Stone at Sumail	Semac & Partners LLC.	Al Ansari Trading Enterprise LLC.	<b>184,000.000</b>
48	Warehouse for Petron Unversal - Sohar	Abdulla Mukadam & Partners	Patron Engineering & Cont. Co.	<b>175,000.000</b>
49	Workshop for Schlumberger	Abdulla Mukadam & Partners	Carillion Alawi LLC	<b>175,000.000</b>
50	Supermarket for Mr. Muaiyid Ali Al Shanfari at Salalah	-	Mr. Muaiyid Ali Al Shanfari	<b>175,000.000</b>
51	Warehouse for M/s Areej Vegetable - Rusayl	Semac & Partners LLC.	MK Construction	<b>174,000.000</b>
52	Factory for wire - Chainlink - Rusayl	Al Jazeera	Chain Link Fencing Co.	<b>165,000.000</b>
53	OXY - Central Processing Store - Mukhaizna	Mott Mcdonald	Special Technical Services LLC	<b>165,000.000</b>
54	Cold Store & Warehouse for ILS at Salalah	Semac & Partner LLC.	Omani Integrated Logistic Services	<b>163,000.000</b>
55	2 Storey Building for Falcon Project at Seeb	COWI & Partners LLC	Omantel - Capital	<b>162,000.000</b>
56	O D C Workshop - Fahud	P D O	Gulfar Engineering	<b>160,000.000</b>
57	Store at Barka for Sterling Int. Trad. & Engg. Services	Al Qarshoobi Engg.	Sterling International Trad.	<b>160,000.000</b>
58	New Factory for Nuhas Oman	Semac & Partners LLC.	Nuhas Oman LLC.	<b>158,500.000</b>
59	Warehouse for Salalah Medical	Balawi Engineering	Salalah Medical	<b>156,000.000</b>

Some of the **PROJECTS EXECUTED** by North West Engineering Works LLC. In Oman

<i>Sr. No.</i>	<i>PROJECT</i>	<i>CONSULTANT</i>	<i>CLIENT</i>	<i>AMOUNT (R.O.)</i>
60	Exp. Work at Rusayl for Nuhas Oman LLC.	Semac & Partners LLC.	Nuhas Oman LLC.	<b>154,500.000</b>
61	Warehouse for Salman Corporation at Rumais	Design Consultants	Salman Corporation	<b>147,000.000</b>
62	Warehouse at Salalah for Towell	Al Abraj Consulting Engineers	Mr. Jameel Bin Ali Bin Sultan	<b>143,000.000</b>
63	Showroom for Teejan Furnishing LLC. at Al Hail	DG Bim Consulting	Nawras Solution LLC.	<b>142,000.000</b>
64	Warehouse at Sumail for Al Khalili	Al Fajer Engineering	Al Khalili Construction	<b>141,150.000</b>
65	Modification Works at Rusayl for Mega Muscat	Semac & Partners	Mega Muscat International LLC	<b>138,800.000</b>
66	Warehouse For Mr. Omar Shanfari at Rusayl	Architecture House	Mr. Omar Salim Al Shanfari	<b>138,000.000</b>
67	H.Q. Bldg. for Al Ansari (8 Storied) at Ghala	Nadan Engineering Consult.	Mohammed Ali Juma Al - Zadjali	<b>137,500.000</b>
68	Factory Building at Raysut for Professional Tiles Co. LLC.	Al Hekma Engineering	Professional Tiles Co. LLC	<b>135,000.000</b>
69	Warehouse for M/s Al Seer Trading at Nizwa	Al Meedania Engineering	Al Seer Trading Agencies	<b>134,000.000</b>
70	Site Office Facility at Sai Rawl for SRDC Phase 2 Project	PDO	Larsen & Toubro Electromech	<b>133,300.000</b>
71	Central Veg. Market Mabellah	DGPM	Al Sulaiman Contg.	<b>132,000.000</b>
72	Multi Storey bldg. At Ghala	Kadri Consultant	Oman Fisheries	<b>132,000.000</b>
73	Workshop for Gulf Energy - Enshaat Const.	Al Manarah	Enshaat Construction	<b>131,000.000</b>
74	Warehouse for LCD factory at Sohar	Balawi Engineering	Al Kahlan Trading & Cont. Co. LLC	<b>130,800.000</b>
75	Factory Exp. at Rusayl for Gulf Plastic	DG Bim Consulting	Gulf Plastic Industries Company	<b>129,500.000</b>
76	Central Kitchen – The Palace - Al Ghubrah	D.G.P.M	The Palace - Muscat	<b>128,000.000</b>
77	Showroom for Al Azizi United at Barka	AL Hatmy Engineering	Al Azizi United Trading LLC	<b>128,000.000</b>
78	Urich Switchgear Factory at Sohar	Al Hatmy Engineering Consult.	Urich Switchgear LLC.	<b>127,000.000</b>
79	Al Enshaat Building Material Plant at Nizwa	Semac & Partners LLC.	Al Enshaat Building Materials Mfg.	<b>125,000.000</b>
80	Warehouse for Mr. Khaleed Al Rasheed at Seeb	Al Manarah Engineering	Mr. Khalid Al Rasheed	<b>124,000.000</b>
81	Proposed Historical Market Building at Sohar	Watad Engg. Consultant	Sohar Development Office	<b>123,800.000</b>
82	Sub-Station Bldg. for JPF West Raudhatain - North Kuwait	Petrocil	Al Yousifi Engg. & Const. Co. LLC.	<b>123,145.000</b>
83	Furniture Factory at Nizwa - Al Habi Trading	Al Mazaya Engg. Consult.	H.H Al Sayyid Asaad Bin Tariq Al Said	<b>123,000.000</b>
84	Supermarket at Al Amerat for Shk. Salim	Al Hatmy Engineering Consult.	Shk. Salim Hamdan Said Al Jabri	<b>123,000.000</b>
85	Building Material Store at Saqsuq Barka - Sterling Int.	Al Qarshoobi Engg.	Sterling International Trad.	<b>123,000.000</b>
86	Carpentry & Mech. Workshop at Barka	Module Engineering Consult.	Al Adrak Trading	<b>122,250.000</b>
87	Ware House - Al Amerat	Al Hatmy Engg.	Saud Bahwan Group	<b>120,000.000</b>
88	Warehouse at 2nd fl. for Areej Vegetable at Rusayl	Semac & Partners LLC	Areej Vegetable Oils & Derivatives	<b>120,000.000</b>
89	A'Saffa Poultry at Rusyal	Semac & Partners LLC.	A'Saffa Foods SAOG.	<b>119,850.000</b>

Some of the **PROJECTS EXECUTED** by North West Engineering Works LLC. In Oman

<i>Sr. No.</i>	<i>PROJECT</i>	<i>CONSULTANT</i>	<i>CLIENT</i>	<i>AMOUNT (R.O.)</i>
90	Warehouse for Tech. Supplies Int. at Seeb	Nadan Engineering Consult.	Technical Supplies International Co	<b>119,800.000</b>
91	Truck Showroom & Workshop @ Ghala	Kadri Consultant	Zubair Corporation	<b>117,000.000</b>
92	Workshop, chemical store & wash bay at nimr	Al Shamil Engineering Consultant	Integrated Petroleum Services Co.	<b>116,500.000</b>
93	Warehouse for Toyota @ Buraimi (5000m2)	Al Hatmy Engg	Services & Trade Co.	<b>115,500.000</b>
94	Expansion for Sweets of Oman at Rusayl	Al Fajer Engineering	Sweets Of Oman	<b>113,500.000</b>
95	VIP Grand stand at buraimi	Al Hatmy Engineering Consultancy	Ministry Of Sports Affairs	<b>112,500.000</b>
96	Deck Slab Structure at Azaiba for NBO - Al Turki	Ibrahimjaidah Architects & Engineers	Al Turki Ent.	<b>112,200.000</b>
97	Compressor Shed – Oxy	Mott Mc Donald	Dodsal Co. L.L.C	<b>112,000.000</b>
98	Warehouse at Rusayl - Nabil Biscuit	Traid Oman Consultant	Nabil Biscuits Co.	<b>112,000.000</b>
99	Labour Accomodation - Al Habib Co.	Al Manara Engineering	Al Habib Co.	<b>112,000.000</b>
100	Workshop for Mazoon Electricity Co. at Sumail	Golden Triangle Engineering	Mazoon Electric Company SAOG	<b>110,500.000</b>
101	Factory Extension - Sohar	Traid Oman Consultant	Godrej & Khimji & Cont. Co. LLC	<b>108,000.000</b>
102	Global Sign at Sohar	Abdulla Mukadam & Partners	Global Signs LLC	<b>108,000.000</b>
103	Steel Door Workshop at Nizwa - Target	National Engineering Office	Target L.L.C.	<b>107,500.000</b>
104	Workshop & Waste Storage Bldg. at Landfill Duqum	Al Hatmy Engineering	Hasan Juma Backer Trading	<b>107,500.000</b>
105	Car Park at SQU	Sultan Qaboos University	Sultan Qaboos University	<b>107,000.000</b>
106	Warehouse at Oil Storage Tank Facilitie at Salalah	Al Manarah Engineering Consult	Omani Vegetable Oils & Derivatives	<b>106,000.000</b>
107	Furniture Factory at Sohar	Traid Oman Consultant	Godrej & Khimji	<b>105,000.000</b>
108	Warehouse for Al Seer at Sohar	Semac & Partners LLC.	Al Seer Trading, Dubai	<b>105,000.000</b>
109	2s Facility for Dhofar Automotive at Mabela	Semac & Partners LLC	Dhofar Automotive LLC.	<b>105,000.000</b>
110	OHI-MDT Warehouse & Office Building at Rusayl	-	OHI Petroleum & Energy Services	<b>105,000.000</b>
111	Workshop & Warehouse for Oasis Industries at Misfa	Abulla Mukadam & Partners LLC.	MPI Const.	<b>104,800.000</b>
112	3S Facility at Bani Bu Ali for Saud Bahwan	Abdulla Mukadam & Partners	Saud Bahwan Automotive LLC.	<b>104,000.000</b>
113	Warehouse at Barka for Oman Integrated Logistics	Muroog Engineering	Oman Integrated Logistics SAOG.	<b>103,200.000</b>
114	Cold Storage at Rusayl	Technical Office for Engg.	Gulf Meat Co. LLC.	<b>102,500.000</b>
115	Workshop for Technical Trading Co. @ Ghala	Semac & Partners LLC.	M.K. Trading	<b>101,000.000</b>
116	Truck Yard Facilities at Jifnein - Truck Oman	Oman Designers Consulting Engineers	Truck Oman LLC.	<b>101,000.000</b>
117	Marble Factory for Sky Inv. at Sumail - Aramco	Al-Manazil Engg consultants	Aramco International LLC	<b>100,500.000</b>
118	Workshop & Hay Barns at Zeenat Farm Thumrait	Royal Court Affairs	Al Bahja Civil Const.	<b>100,000.000</b>
119	Multipurpose Hall for M.O.I. at 4 location	Kadri Consultants	Arabian Tech. Supplies	<b>100,000.000</b>



Some of the **PROJECTS EXECUTED** by North West Engineering Works LLC. In Oman

<i>Sr. No.</i>	<i>PROJECT</i>	<i>CONSULTANT</i>	<i>CLIENT</i>	<i>AMOUNT (R.O.)</i>
120	Warehouse & Workshop for Habitat Int. LLC. at Sumail	Al Fajer Engineering	Habitat Int. LLC	<b>100,000.000</b>
121	Supermarket at Mushanah - Mr Hadabi	Artistry Engg. Consult.	Mr. Naser Said Naser Al Hadabi	<b>97,000.000</b>
122	Multi-Utility building at Salalah	Oman Engineering Consultancy	Mr. Salim Mohamed Said Al Shanfari	<b>96,600.000</b>
123	Census Building - Carillion Alawi	Bisan Engg.	Carillion Alawi	<b>95,000.000</b>
124	Workshop For Gorica Vechicles	Semac & Partners LLC.	Gorica Co. LLC.	<b>95,000.000</b>
125	Lulu Hyper Market at Ibri	Al Fajer Engineering Consultant	Sheikh Abdullah Salem Rashid Al Zidi	<b>95,000.000</b>
126	Workshop For TPO at Rusayl	National Engg. Office	Target LLC.	<b>95,000.000</b>
127	Workshop for Gulf Traingle Industries at Rusayl	Saiq Salim Al Mahrouqi	Mr. Younis Suleiman Al Amri	<b>94,000.000</b>
128	Exp. of Cargo Building at Airport for Oman Air	Semac & Partners LLC.	Oman Air	<b>93,000.000</b>
129	Proposed Historical Market Building at Sohar	Watad Engineering Consultant	Sohar Development Office	<b>91,800.000</b>
130	Warehouse at Ghala	Triad Oman	Qais Omani Establishment	<b>90,000.000</b>
131	Warehouse for Unique Cont. Co. at Rusayl	Al-Fazer Engineering	Unique Contracting Co. LLC	<b>90,000.000</b>
132	Carpentry Workshop for Bastani Trading At Barka	Scientific Ink Engg. Consultant	Bastani Trading LLC.	<b>88,400.000</b>
133	Store for Salalah Mills Co. at Rusayl	Creative Engineering Consult.	Salalah Mills Co. SAOG	<b>88,000.000</b>
134	Medical Store Building at S.Q.U. - Al Adrak	Abdulla Mukadam & Partners	Sultan Qaboos University Hospital	<b>87,900.000</b>
135	Car Park for Ministry of Interior at Al Khuwair	Kadri Consultants	Ministry Of Interior	<b>87,680.000</b>
136	Warehouse at Al Amerat (Phase II)	Al Hatmy Design & Engg.	Mr. Shk. Salim Hamdan Said	<b>86,500.000</b>
137	Proposed Warehouse at Al Amerat (Phase II)	Al Hatmy Design & Engg. Consult.	Mr. Shk. Salim Hamdan Said	<b>86,500.000</b>
138	Date Factory at Zeenat Al Sahra Farm - Al Ansari	-	Royal Court Affairs	<b>86,482.750</b>
139	KIA Motor – Barka & Sohar	Abdulla Mukadam & Partners	Mohammad Sultan Al Amri L.L.C.	<b>86,000.000</b>
140	Mineral Facility at Sohar for Ashapura	Semac & Partners LLC	Ashapura Chemicals LLC.	<b>86,000.000</b>
141	General Store for RCA at Salalah - Creation Int.	Royal Court Affairs Salalah	Creation International LLC.	<b>86,000.000</b>
142	Shopping Center for Ramez Group at Al Khuwair	Al Fazer Engg. Consultant	Sam Building Contracting LLC.	<b>85,000.000</b>
143	Omantel Stores at Al Amerat	Leeyana Consultant	Alam Al Jadeed Cont.Co	<b>84,000.000</b>
144	Warehouse at Ghala for WAS Trading	Dar Al – Handasah Engg.	Mr. Saud Al Rasbi	<b>84,000.000</b>
145	Oman Aluminium Rolling Mill - Teejan	Teejan Trading & Contracting	F.A.T.A.	<b>84,000.000</b>
146	VIP Stand at Sports Complex at Rustaq	Capital Arts Consulting	Ministry of Sports Affairs	<b>84,000.000</b>
147	Packaging Plant at Salalah	Omani Engg. Consultancy Co.	Global Services Group LLC.	<b>82,000.000</b>
148	Store Building for Oman Est. For Press at Quram	Image Design Consultants	Oman Est. For Press, Publication	<b>82,000.000</b>
149	Production Shed & Store for MNI at Ghala	Masar Engineering	Maryam International	<b>82,000.000</b>

Some of the **PROJECTS EXECUTED** by North West Engineering Works LLC. In Oman

<i>Sr. No.</i>	<i>PROJECT</i>	<i>CONSULTANT</i>	<i>CLIENT</i>	<i>AMOUNT (R.O.)</i>
150	Al Azzaman Printing Press at Sumail	Abu Al Enen Group Engg	Al Azzaman Establishment	<b>80,500.000</b>
151	EME workshop at Shafa	MOD	Hasan Juma Backer Trad.& Cont.	<b>80,000.000</b>
152	Packaging Factory @ Rusayl	Semac & Partners LLC.	Dunes International L.L.C.	<b>80,000.000</b>
153	Warehouse ODC-PDO	P D O	Gulfar Engineering	<b>80,000.000</b>
154	Goat & donkey paddock riadh al jebel farm at jabel akhdar	Royal Estates - Seeb	Rizwan Safwan Awladthani Trad.	<b>80,000.000</b>
155	Cold Store at Ghala - Mr. Salim Bin Ali Bin Farsi	Abdulla Mukadam & Partners	Mr. Salim Bin Ali Al-Farsi	<b>80,000.000</b>
156	CED - PDI facility	Al Hatmy Engg	Saud Bhavan Group	<b>78,000.000</b>
157	Body Shop for Al Hashar	Abdulla Mukadam & Partners	Al Hashar & Co.	<b>76,000.000</b>
158	Expansion works for Al Jazeera Steel at Sohar	Semac & Partners	Al Jazeera Steel Products	<b>75,525.000</b>
159	10 Sheds for Golden furniture	Al Rawaq Engg.	Golden Furniture Co.	<b>75,000.000</b>
160	Warehouse for Quarnalam & Steam Project	P.D.O.	Gulfar Engineering & Cont. Co. LLC	<b>75,000.000</b>
161	New Carton Storage Shed for Areej Vegetable	Semac & Partners	Areej Vegetable Oils & Derivatives	<b>75,000.000</b>
162	Mock Up Shed for Salalah Airport Project MC5	Cowi & Partners L.L.C.	L. & T. Limited	<b>75,000.000</b>
163	Mess & Workshop Facility for OXY at Safah	Triad Oman Engg.	Nafal Contracting Co.	<b>75,000.000</b>
164	Jibreen Logistic at Sohar	Al Fajer Engineering	Jibreen Logistics Co. LLC.	<b>75,000.000</b>
165	Factory for Tech. Rubber at Sohar	Technical Rubber LLC	Technical Rubber LLC	<b>74,000.000</b>
166	Reem Battery Charging	Semac & Partners LLC.	Reem Batteries	<b>72,155.000</b>
167	Carton Fact. Ext. at Salalah - Ind. Packaging Int.	Omani Engineering Consultancy co.	Industrial Packaging Int. Co. LLC.	<b>69,000.000</b>
168	Hanger @ Al Mushnah Airbase	Carillion Alawi	Carillion Alawi L.L.C	<b>68,000.000</b>
169	Commercial Bldg. for Mr. Faisal Boodai - Kuwait	Al Fajer Engineering	Mr. Saif Ali Ahmed Al Busaidi	<b>67,000.000</b>
170	Warehouse for Bahwan Auto Mobiles	A + D Consultants	Service & Trade Company	<b>67,000.000</b>
171	Warehouse at Musanah for Pepsi co.	Architectural Wall Systems	Oman Refreshment Co.	<b>66,000.000</b>
172	Warehouse for Amouage at Rusayl	Consulting Engineering Service	Amouage	<b>65,640.000</b>
173	Factory Shed – Rusayl	Semac & Partners LLC.	Muscat Thread Mills Co.	<b>65,000.000</b>
174	Plant for Taghleef Ind. at Sohar - Faq Int.	Semac & Partners LLC	Taghleef Industries LLC.	<b>64,000.000</b>
175	Oman Aluminium Rolling Mill - Teejan	F.A.T.A.	Oman Aluminium Rolling Mill	<b>63,000.000</b>
176	Warehouse for Areej Vegitable	Semac & Partners LLC.	Areej Vegitable	<b>62,000.000</b>
177	Showroom at Nizwa for Mr. Zaher al Abri	Al Qarshoobi Engineering	Mr. Zaher Suliman Zaher Al Abri	<b>62,000.000</b>
178	Chiller building & EOT crane for Allied Business	Capital Engineering	Allied Business Corporation	<b>61,500.000</b>
179	Third Firing Plant Shed at Nizwa - Al Anwar	Abdulla Mukadam	Al Anwar Ceramic Tiles Co. SAOG	<b>61,000.000</b>

Some of the **PROJECTS EXECUTED** by North West Engineering Works LLC. In Oman

<i>Sr. No.</i>	<i>PROJECT</i>	<i>CONSULTANT</i>	<i>CLIENT</i>	<i>AMOUNT (R.O.)</i>
180	Ext. of Store for W.A.S. at Ghala	-	Muscat Road Const. & Civil Works	<b>61,000.000</b>
181	National Private School at Al Khuwair	Architectural Development	Majan Consolidated	<b>60,000.000</b>
182	Carpentry & Mech. Workshop at Barka	Module Engineering Consultants	Al Adrak Trading	<b>60,000.000</b>
183	Engg. Workshop for Dhofar University	Tameer Engineering Consult.	Al Aetimad Trading. & Cont. Est.	<b>59,700.000</b>
184	Dqum Desalination Plant Buildings	Mott MacDonald	L & T Electrometric	<b>59,000.000</b>
185	Car Shed (3300m2) for Oman LNG at Sur	Mott MacDonald	Carillion Alawi LLC	<b>58,000.000</b>
186	Warehouse at Misfa for Mr. Soud Musallam Hamad	Dar Al Handasah Engineering	Wadi Al Shaab Trading	<b>57,150.000</b>
187	Store for RO Plant Al Kamil - Al Kannah	Strait Gate Engineering	Al Khanah Technical Engineering	<b>57,000.000</b>
188	Cold Store at Wadikabir	Technical Office for Engg.	Gulf Meat Co. LLC.	<b>57,000.000</b>
189	Cold Store at Wadikabir for Gulf Meat Co.	Technical Office for Engg.	. Gulf Meat Co. LLC	<b>57,000.000</b>
190	Oasis Mall at Juffair, Bahrain	MSCEB Architects & Engineers	United Steel Trading	<b>57,000.000</b>
191	Workshop Facility for MHD at Barka - M.K.	Triad Oman Consultants	MHD LLC.	<b>56,500.000</b>
192	Accommodation at Salalah - Al Habib	Al Manarah Engineering	Al Habib & Co. LLC.	<b>55,950.000</b>
193	Warehouse for Mr. Abdullah Al Rawahy at Saqsuq (Barka)	Abdulla Mukadam	Mr. Abdullah Al Rawahy	<b>55,500.000</b>
194	Rima Carbonate Industries Rusayl	Semac & Partners LLC.	Service & Trade Co.	<b>55,000.000</b>
195	Warehouse & Workshop at Safa	Occidental Oman Inc	Nafal Contracting Co.	<b>55,000.000</b>
196	Buildg. Material Store for Khurshid Trad at Barka	Al Hatmy Engg. Consultants	Mr. Moh'd. Ashraf Niyaz Ali	<b>55,000.000</b>
197	Ceremony Hall at Salalah for Mr. Khalid Bin	Omani Engineering Consultancy	Khalid Bin Ahmed & Sons LLC.	<b>55,000.000</b>
198	Lays Store for Pepsi	Al Jazeera Engineering Consult.	Oman Refreshment Co.	<b>54,200.000</b>
199	Lays Store for Pepsi	Al Jazeera Engg. Consult.	Oman Refreshment Co.	<b>54,200.000</b>
200	Four shed at Ghala	J S A	Golden Furniture	<b>54,000.000</b>
201	Future Pipe Industries @ Rusayl	Al Abraj Engineering	Towel Construction Co.	<b>54,000.000</b>
202	Warehouse for Al Siraj at Mabella	DG Bim Consultong	Al Siraj Investment Holding LLC	<b>54,000.000</b>
203	Storage Building for Middle East College at Rusayl	Technical Office for Engg.	Middle East College	<b>54,000.000</b>
204	Heat Cured Plant at Sohar	Nadan Engineering	Arabian Industries	<b>52,500.000</b>
205	Comm. Complex at Al Amerat	Abdulla Mukadam & Partners	Arabian Tech. Supplies.	<b>52,000.000</b>
206	Toyota facilities @ Ibri	Abdulla Mukadam & Partners	Service & Trade Co.	<b>52,000.000</b>
207	Rebuild Reem Batteries	Semac & Partners LLC.	Reem Battery	<b>52,000.000</b>
208	Engine Hall at Salalah	Rural Elect. Co.	SFO	<b>52,000.000</b>
209	Multi Storey Deck Stru. at Ghala - Professional	Iskan Consultant	Professional Trading LLC.	<b>52,000.000</b>



Some of the **PROJECTS EXECUTED** by North West Engineering Works LLC. In Oman

<i>Sr. No.</i>	<i>PROJECT</i>	<i>CONSULTANT</i>	<i>CLIENT</i>	<i>AMOUNT (R.O.)</i>
210	Warehouse at Rusayl for Nuhas Oman	Semac & Partners	Nuhas Oman LLC	<b>52,000.000</b>
211	Warehouse for wadi al shaab trad. at bausher	Design Consultants	Oman Marketing & Services Co.	<b>52,000.000</b>
212	Multi-Storied Bldg. for Mr. Khalfan Salim at Mabelah	Dar Al Handasah	Mr. Khalfan Salim Nasser Al Busaidi	<b>52,000.000</b>
213	Custom Shed at Sarah Post for Teejan Trading	Royal Oman Police	Teejan Trading	<b>52,000.000</b>
214	Storage Facility for Amouage Factory at Rusayl	Consulting Engineering Services	Amouage	<b>51,700.000</b>
215	Storage Facility for Amouage Factory at Rusayl	Consulting Engineering Services	Amouage	<b>51,700.000</b>
216	Exp. Workshop for Fiber Glass system at Sohar	Abdulla Mukadam & Partners	NOV Fiber Glass Systems	<b>51,500.000</b>
217	Fabrication Workshop at Samail For BOGS	Al Fajer Engineering Consultant	Best Oil & Gas Solutions LLC	<b>51,000.000</b>
218	Space frame for Sultan Qaboos sports	Bisan Engg.	Al Sada Int'l Trad. & Cont. Co.	<b>50,700.000</b>
219	Temporary workshop at sohar	Consolidated Contractors	Consolidated Contractors	<b>50,400.000</b>
220	Mezzanine Structure - Reem Batteries	Semac	Reem Batteries	<b>50,000.000</b>
221	Shed for Oman Cable Industries	Al Hatmy Engg	Mustafa & Kamal Ashraf Trad & Co	<b>50,000.000</b>
222	Warehouse for sleep ezze at rusayl - Al Maiyha	Technical Office For Engineering	Al Maiyha Falcons Trading & Cont.	<b>50,000.000</b>
223	Warehouse at Rumais for Moh'd Riaz & Partner LLC.	Al Hatmy Engineering Consult.	Mr. Moh'd. Ashraf Niyaz	<b>49,300.000</b>
224	Store, Office & Plant Building at Barka	Gulf Petrochemical Services	Gulf Petrochemical Services LLC.	<b>48,500.000</b>
225	Trade in Showroom for Toyota	Al Hatmy Engg	Haifa construction co LLC	<b>48,000.000</b>
226	Gulf Stone at Sohar	Semac & Partners LLC.	M.K. Construction	<b>48,000.000</b>
227	Workshop for Mobilift at Sohar	Abdulla Mukadam & Partners	Mobilift	<b>48,000.000</b>
228	Factory for Amouage at Rusayl - NECC	Consulting Engineering	Amouage	<b>47,800.000</b>
229	Children play area for Mr. Abdul Aziz at Mabelah	Orix Consultant	Barka Mall	<b>47,000.000</b>
230	Shopping Mall at Al Kamil - Al Kannah	Strait Gate Engineering	Al Khanah Technical Engineering	<b>46,500.000</b>
231	Warehouse at Rumais for Moh'd Riaz	Al Hatmy Engg. Consult.	Mr. Moh'd. Ashraf Niyaz Ali	<b>46,300.000</b>
232	Warehouse & Office Building at Misfa - Al Manar Const.	Design Consultants	Al Manar Construction	<b>46,200.000</b>
233	L.R.C. Building Majan College at Darsait	Abdulla Mukadam & Partners	Majan College (University College)	<b>46,000.000</b>
234	Factory for Marble & Granite at Buraimi	Semac & Partner LLC.	Gulf Mining Group of Companies	<b>46,000.000</b>
235	Piping Plant Extn Sohar - L&T Modular Fab. Yard	Abdulla Mukadam & Partners	Larsen & Toubro Limited	<b>46,000.000</b>
236	Workshop & Store for Swiss Boring at Barka	EIDC	M/s Swiss Boring	<b>45,500.000</b>
237	Development of rahat al andhar farm area at sohar	Royal Court Affairs	Hussain Fadhil & Partners	<b>45,220.000</b>
238	Reconst. Of burnt shed	Semac & Partners LLC.	Reem Battery Co.	<b>45,000.000</b>
239	AUB Hidd Warehouse at Biw Bahrain - United Steel Trad.	MSCEB Architects & Engineers	United Steel Trading	<b>45,000.000</b>

Some of the **PROJECTS EXECUTED** by North West Engineering Works LLC. In Oman

<i>Sr. No.</i>	<i>PROJECT</i>	<i>CONSULTANT</i>	<i>CLIENT</i>	<i>AMOUNT (R.O.)</i>
240	Healthcare facility at Liwa - Al Batinah Cont.	Gulf Engineering Consultancy	Al Batina International Engg.	<b>44,000.000</b>
241	Multipurpose Hall & Car Park for MOI at Liwa	Kadri Consultant	Abu Riyadh Trading & Contracting	<b>43,800.000</b>
242	Multipurpose Hall & Car Park for MOI at Awabi	Kadri Consultant	Abu Riyadh Trading & Contracting	<b>43,800.000</b>
243	H.O.T. CRANE – OXY - DODSAL	Mott Mc Donald	Dodsall Co. L.L.C	<b>43,600.000</b>
244	Batching Plant for Al Salami Concrete at Sohar	Abdulla Mukadam & Partners	Al Salami Concrete Products LLC	<b>43,600.000</b>
245	Carpark at SQUH Al Khoud - Muscat Road	-	Sultan Qaboos University	<b>42,811.000</b>
246	Block Factory at Jifnain for Urich Concrete	AL Hatmy Engg. Consultancy	Hasan Juma Backer	<b>42,800.000</b>
247	Re-Construction of Al Khaleej Polypropylene	Semac & Partners LLC.	Al Khaleej Polypropylene Sohar	<b>42,500.000</b>
248	Facility for Orbital at Sohar	Abdulla Mukadam & Partners	Orbital Projects & Services LLC.	<b>42,000.000</b>
249	Workshop for M/s. Smawel at Mabelah	Panorama Engg. Consult.	Samawal AL Hinai	<b>42,000.000</b>
250	Towell Training Centre at Rumaise, Barka	Al Abraj Consulting Engineers	Towell Construction & Co. LLC.	<b>41,500.000</b>
251	Stores for Al Watan @ Azaiba	Semac & Partner	AL Watan News Papers Co	<b>41,200.000</b>
252	Warehouse at Al Amerat for Mr. Said Al Jabry	Al Hatmy Design & Engg.	Mr. Said Al Jabry	<b>41,000.000</b>
253	Shed for OIS at Nimr PDO - Enshaat Const.	PDO	PDO	<b>41,000.000</b>
254	Workshop for Best Oil & Gas Solut. at Jafanin	Al Fajer Engineering Consultants	Best Oil & Gas Solution LLC	<b>40,500.000</b>
255	Workshop for Best Oil & Gas Solution at Jafanin	Al Fajer Engineering Consult.	Best Oil & Gas Solution LLC.	<b>40,500.000</b>
256	GRP Pipe Factory – Sohar Sheeting & ACC	Semac & Partners LLC.	Sharq Al Mutawasat	<b>40,000.000</b>
257	Store at Mabailah	AL Medania	Ministry of Water Resources	<b>40,000.000</b>
258	Warehouse at Rusayl	Design Consultant	Mr. Salim Al Shaksy	<b>40,000.000</b>
259	MEP Housing Roof Shed for GUTECH at Barka - L & T	Hoehler & Partner LLC.	OES Oman Educational Services LLC.	<b>40,000.000</b>
260	Multi Storey Deck Structure at Mabella	Saif Bin Salim Bin Ali Al Mahrooqi Design	Danat A'zaman Company LLC.	<b>40,000.000</b>
261	Marble & Granite - Al Adrak	-	Al Adrak Trading & Contracting	<b>40,000.000</b>
262	Meat Processing at Saada, Food Zone Salalah	Global Services Group LLC.	Global Services Group LLC.	<b>40,000.000</b>
263	Multipurpose Hall & Car Park for MOI at Nakhal	Kadri Consultant	Abu Riyadh Trading & Contracting	<b>39,500.000</b>
264	Cold store for Southern Food at Salalah	Al Saqf Engineering Consult.	Southern Foods L.L.C.	<b>38,950.000</b>
265	Hall for Sur Beach Hotel - Sur	Al Shamil Engineering Consult.	Shk. Mubarak bin juma ali Bahwan	<b>38,500.000</b>
266	Warehouse at Mutrah for Mr. Hassan Essa Ali	Al Bahri Engineering Consult.	Mr. Hassan Essa Ali Al Farsi	<b>38,000.000</b>
267	TBA Facilities for Toyota - Wattayah	Al Hatmy Engg.	Ghalfar Engg. & Contracting	<b>38,000.000</b>
268	Construction of basic education school at Jifnain	Al Saqf Engineering	Creation International LLC.	<b>38,000.000</b>
269	Showroom at Nizwa - Mr. Nasser Ali Nasser Al Kindi	-	Mr. Nasser Ali Nasser Al Kindi	<b>37,250.000</b>

Some of the **PROJECTS EXECUTED** by North West Engineering Works LLC. In Oman

<i>Sr. No.</i>	<i>PROJECT</i>	<i>CONSULTANT</i>	<i>CLIENT</i>	<i>AMOUNT (R.O.)</i>
270	Warehouse for Sheikh Yacoob at Wadi Adai	Traid Oman Consultant	Mr. Sheikh Yacoob Al Harthy	<b>37,000.000</b>
271	Trailer Workshop at Nimr	Retaj Engg. Consult.	Saa Engineering	<b>37,000.000</b>
272	Store at Barka for Ajay Ent.	Jadawill Engg. Consultancy	Ajay Enterprises	<b>37,000.000</b>
273	Warehouse at Rusayl for Al Siraj Investment Holding LLC.	DG Bim Consulting	Al Siraj Investment Holding LLC.	<b>37,000.000</b>
274	Market For Household @ Shinas	MRMEWR	Ali Hamad Said Al Musalhi	<b>36,500.000</b>
275	Cold Store for Abdul Fatam Noor at Rusayl	Abdulla Mukadam & Partners	Mr. Abdul Fatam	<b>36,500.000</b>
276	Multipurpose Hall at Al Kamil for MOI - ATS	Kadri Consultant	Arabian Technical Supplies & Cont. LLC	<b>36,500.000</b>
277	Tiles Factory at Salalah	Al Hikmah Engg. Consult.	Professional Tiles Company	<b>36,000.000</b>
278	Barka Mall Extension for Dr. Abdul Aziz Yousuf	Afaaq Al Gaza Trading	Dr. Abdul Aziz Yousuf	<b>36,000.000</b>
279	Lecture Hall at Nizwa University - Celik LLC.	Cowi & Partners LLC	Celik Is LLC	<b>36,000.000</b>
280	Warehouse at Wadiakbir for Shah Nagardas	Abdulla Mukadam	Mr. Ramesh & Navin Chandra	<b>35,600.000</b>
281	Warehouse at Wadiakbir for Shah Nagardas	Abdulla Mukadam & Partners	Mr. Ramesh Nagardas Shah	<b>35,600.000</b>
282	Warehouse at Wadiakbir for M/s. Shah Nagardas	Abdulla Mukadam & Partners	Mr. Ramesh & Navin Chandra	<b>35,600.000</b>
283	Store Shed at Al Kamil - Al Khanah Technical	Strait Gate Engineering	Al Khanah Technical Engineering	<b>35,400.000</b>
284	Workshop for Oman Portuguese Cement - Sohar	Abdulla Mukadam	Oman Portuguese Cement Co.	<b>35,000.000</b>
285	Comm. Bldg. for Mr Abdulla Mohd. Nasser Al	Space Designers International	Abdullah Mohd. Nasser al saadi	<b>35,000.000</b>
286	Roof Truss System for Al Khoudh School	M.A. Archit. Design Consult.	Al Omaniya Education services	<b>35,000.000</b>
287	Fish Processing Unit at Duqm - Masirah Sea Products	Oman Engineering Consultant	Masirah Sea Products LLC	<b>35,000.000</b>
288	Store for Mohd. Azzani at Rusayl	Al Mashroo' Engineering	Mr. Mohammed Azzani	<b>34,500.000</b>
289	Mineral Water Shed for Al Mazyona at Barka	Jadawill Engg. Consultancy	Al Mazyona Mineral Water Co.	<b>34,500.000</b>
290	Factory for Al Mazyona Mineral Water at Barka	Jadawill Engineering	Al Mazyona Mineral Water Co.	<b>34,000.000</b>
291	Water Injection pump shed – 12 Nos	Granherne & Co.	Zubair Kilpatrick LLc.	<b>34,000.000</b>
292	Store for Integrated Petroleum at Nizwa - Enshaat Const.	Al Manarah	Enshaat Construction	<b>34,000.000</b>
293	Expn. Reem Battery at Rusayl	Semac & Partners LLC.	Reem Battery	<b>33,800.000</b>
294	Animal & Fish Shed at Al Kamil	MRMEWR	Naser Hamad Al Maliky Trading	<b>33,750.000</b>
295	Paddock Shed - 5 nos. at Jabel Akhdar	Royal Estates – Seeb	Rizwan Safwan Awladthani Trad.	<b>33,300.000</b>
296	Testing Workshop at Safah for OXY - DSM	Al Fajer Engineering Consult.	M/s Occidental of Oman, Inc	<b>33,000.000</b>
297	Warehouse at Rumais for Moh'd Riaz & Partner	Al Hatmy Engineering	Mr. Moh'd. Ashraf Niyaz Ali	<b>33,000.000</b>
298	CED Facility at Salalah for Saud Bahwan	Al Hatmy Engineering Consultancy	Al Shathri Trad. & Cont. Est.	<b>33,000.000</b>
299	Light Vehicle Car Parking for ROP at Sahma	Royal Oman Police	Petroject LLC.	<b>33,000.000</b>



Some of the **PROJECTS EXECUTED** by North West Engineering Works LLC. In Oman

<i>Sr. No.</i>	<i>PROJECT</i>	<i>CONSULTANT</i>	<i>CLIENT</i>	<i>AMOUNT (R.O.)</i>
300	Mineral water at Kuriyat	AZRI consultant	Al Ghadheer mineral water co	<b>32,900.000</b>
301	Multipurpose Hall at Salalah - Mahouni Mohd.	Creative Engineering Consult.	Mahouni Mohd. Aqeel Ba.omar	<b>32,600.000</b>
302	Caledonian Engineering College	Al Shamil	Mohammed Sultan Al Amri L.L.C.	<b>32,550.000</b>
303	Office For PDO	Gulf Engineering Co.	Al Ansari Enterprises L.L.C.	<b>32,000.000</b>
304	Store for L & T Heavy Engg. - Sohar	Semac & Partners LLC.	L & T Heavy Engineering L.L.C.	<b>32,000.000</b>
305	Animal Souq - Buraimi	Hasan Ali Eid	Asha Enterprises LLC	<b>31,500.000</b>
306	Warehouse at Sohar for M.H.D.	Triad Oman Consultants	M.H.D.	<b>31,500.000</b>
307	Accident & Emergency Unit at Jalan Bani Bu Ali	Ministry of Health Directorate	Ali Amin Ramadhan Trad. Co. LLC.	<b>31,500.000</b>
308	Stadium Canopy	Al Hatmy Engg.	Al Adrak Trading & Contracting	<b>30,800.000</b>
309	03 nos. shed for M/s Petron at Sohar	Abdulla Mukadam	Petron Universal Engineering	<b>30,650.000</b>
310	Store Shed for Mr. Ali Mata'ani at Bausher	Razaz Engg. Consultancy	Mr. Ali Hamed Ali Jameea Al Mata'ani	<b>30,200.000</b>
311	Store Shed at Bausher - Union Towers	Razaz Engg. Consultancy	Mr. Ali Hamed Ali Jameea	<b>30,200.000</b>
312	Factory Shed – Rusayl	Semac & Partners LLC.	Reem Batteries LLC	<b>30,000.000</b>
313	Qurum Ampitheater	DGTA	Muscat Municipality	<b>30,000.000</b>
314	SHED for Salalah pipeline at Haima & Nimr	Dodsall Co.	Dodsall co. LLC	<b>30,000.000</b>
315	Hanger for Rafo Salalah	M.O.D.	Abu Hatim Co LLC	<b>30,000.000</b>
316	Hording Structures @ Wattayah	Al Hatmy Engg.	Saud Bahwan Group Co.	<b>30,000.000</b>
317	Workshop at Ghala	Leeyana Engineering	Maintenance Limited	<b>30,000.000</b>
318	Warehouse at Wadikabir - Towell Const.	Al Abraj	Towell Construction	<b>30,000.000</b>
319	Marriage Hall for Mr. Zahir Al Rashidi at Shinaw	-	Mr. Zahir Al Rashidi	<b>29,000.000</b>
320	Market & Cold Store @ Sohar	Abdulla Mukadam & Partners	Al Ansari Enterprises L.L.C.	<b>28,800.000</b>
321	Bldg. Material Store at Barka for Khurshid Trad	Al Hatmy Engineering	Mr. Moh'd. Ashraf Niyaz Ali	<b>28,500.000</b>
322	Re construction of Burnt shed	AUSCON	Gulf Acrylic Co. LLc	<b>28,000.000</b>
323	Factory Ext. at Barka for Mr. Ajay - Al Bahja	Jadawill Engineering Consult.	Mr. Ajay Sujay / Ajith Kumar	<b>28,000.000</b>
324	Industrial Shed for Mr. Zadjali at Rusayl	Elegant Design Engg.	Saif Salim Essa Al Harsi Co.	<b>28,000.000</b>
325	Car Park for Ministry of Interior - Al Adrak	Al Saqf Engineering Consult.	Ministry of Interior	<b>27,600.000</b>
326	Car Park for Zawawi Trading at Qurum	Kadri Consultant	Zawawi Trading Co.	<b>27,500.000</b>
327	Donkey Stable - DGPM - Hammad Mohd. Cont.	Royal Estate	Royal Estate - Seeb	<b>27,500.000</b>
328	Showroom & Store at Misfa	Capital Arts Consulting	Mr. Hamed Sulaiman Al Hatami	<b>27,500.000</b>
329	Warehouse - Roofing - Qurum	Govt. of Oman	Govt. of Oman - Qurum	<b>27,200.000</b>

Some of the **PROJECTS EXECUTED** by North West Engineering Works LLC. In Oman

<i>Sr. No.</i>	<i>PROJECT</i>	<i>CONSULTANT</i>	<i>CLIENT</i>	<i>AMOUNT (R.O.)</i>
330	Oman Gas – Fahud, Nimr & Salalah	Oman Gas	AL MAJID CONT co	27,000.000
331	Bowling Centre @ Muscat	Balawi Engineering	Al Baleed Tourism	27,000.000
332	Factory for Bin Ahmed Enterprises at Rusayl	Al Jazeera Engineering Consult.	Bin Ahmed Enterprises L.L.C.	27,000.000
333	Oxygen Plant for Muscat Steel at Rusayl	Al Fajer Engineering Consultant	Muscat Steel Melting Co. LLC.	27,000.000
334	Workshop at Misfa for Deebaj National Ent.	Al Moheet Consulting	Deebaj National Enterprises LLC.	27,000.000
335	Munitions Shed For DynCorp.	DynCorp. Inc	Maintenance Limited	26,500.000
336	Cold Store for Mr. Abdul Fatam	Abdulla Mukadam & Partners	Mr. Abdul Fatam	26,500.000
337	Blasting & Painting Shed at Sohar - A.I.	Nadan Engineering	Arabian Industries	26,400.000
338	Factory @ Sohar	Abdulla Mukadam & Partners	Sharq Sohar Rolling Mill Co.	26,000.000
339	Oxy Flood Water Facility - Safa-6 Nos	Mott McDonald	Mustafa & Kamal Ashraf Trad & Co	26,000.000
340	Factory @ Sohar	Century Architect	Shamil Plastic Co.	26,000.000
341	Sports Complex for MOD @ Masirah	M.O.D.	Al Mashoor Trading Co.	26,000.000
342	Automotive Workshop for Min. of Manpower	Al Manarah	Ali Amin Ramdhan Trading	26,000.000
343	Factory at Rusayl	Leeyana Engineering	Al Habib Group	26,000.000
344	Store at Ghala	Kamal Ismail	Deebaj National Enterprises	26,000.000
345	Prayer Hall at Al Hail - Oasis Grace	Capital Engineering Consultancy	Oasis Grace LLC.	26,000.000
346	Crane Structure for OOISS at Ghala	-	Oman Oil Industry Supplies & Services Co. LLC.	26,000.000
347	Medical Store For MOE - Royal Hospital	Azri Architect	Al Majid Trading & Contracting	25,600.000
348	Shariya College at Wattayah	Jabreen Engg.	Al Majid Trading & Contracting	25,500.000
349	Salt Storage warehouse shed	Semac & Partners LLC.	Oman Chlorine LLc	25,000.000
350	Warehouse at Mabella	Kamal Ismail	Suleiman Al Jabry	25,000.000
351	Meziona store at Raysut Ind. Estate	Ibn Khuldoon	Al Majid Contracting	25,000.000
352	Factory Safeway Engg. @ Rusayl	Semac & Partner	Mohd Sultan Al Amri L.L.C	25,000.000
353	Felaj Daris Hotel @ Nizwa	R.O.P.	Royal Oman Of Police	25,000.000
354	Training Centre at MAF	Oman Refinery Co.	Al Habi Trading & Contracting	25,000.000
355	Roof Structure for Academic Bldg. at Kingdom University,Bahrain	Sami Alaali Engg.	United Steel Trading	20,500.000



## **LIST OF PROJECTS UNDER EXECUTION**




Projects **UNDER EXECUTION** by North West Engineering Works LLC.

<i>Sr. No.</i>	<i>PROJECT</i>	<i>CONSULTANT</i>	<i>CLIENT</i>	<i>AMOUNT (R.O.)</i>
1	Broiler Shed for A'Saffa Poultry at Thumrait	Semac & Partners LLC	A'Saffa Foods SAOC	<b>5,440,000.000</b>
2	OIDC Mall at Madinat Sultan Qaboos (Phase-I under completion)	Al Abraj Consultating	Towel Construction Co	<b>1,500,000.000</b>
3	Facilities for Barzman Foods at Barka	Space Designers Int. LLC.	Barzman Foods LLC.	<b>780,000.000</b>
4	Finnish School Building for Gutech at Halban	Architectural Wall Systems	Al Subhiah Trading & Cont. Co.	<b>275,000.000</b>
5	Accommodation complex for Prisnors at Thumrait	Royal Oman Police	Service and Trade Co	<b>185,000.000</b>
6	Warehouse for Diwan Royal Court - Abu Riyadh	Design Unit Engg.	Abu Riyadh Trading	<b>161,602.000</b>
7	Warehouse & Workshop Facilities for Oman Refreshment at Al Ghoubra & Haima	Abulla Mukadam & Partners LLC.	Oman Refreshment Co. (PEPSI)	<b>120,000.000</b>
8	Workshop, Showroom Facilities for ONEIC at Misfa	Capital Engineering	ONEIC SAOC	<b>100,000.000</b>
9	Tuna Factory at Salalah	Creative Engineering Consultants	Bin Hilabi Trading	<b>85,000.000</b>
10	Carton Factory at Suwaiq for Packaging Co. Ltd - Al Bahja	Al Shamil Engg. Consultancy	Al Bahja Civil Const.	<b>60,800.000</b>
11	Commercial Building for Mr. Salim Al Wahaibi at Bausher	Kamal Ismail Consultant	Mr. Salim Aiman Al Wahaibi	<b>60,000.000</b>
12	Sports Complex for WPCA at Nizwa - Al Adrak	Royal Oman Police	Al Adrak Trading	<b>45,500.000</b>



## **Q.A. / Q.C. POLICY**

	<b>NORTH WEST ENGINEERING WORKS L.L.C.</b>	
	Management System	Ref: NW/M/MS/003
	Quality Manual	Rev: 00.
		Date: 01/07/2008
Rusayl	Quality Policy	Issue: 01
		Page 1 of 1

**North West Engineering LLC is committed to:**

**Keep NW as a leading Organization in our field** by providing quality products and services to all customers.

**Implement, maintain, monitor and improve its Quality Management System**, in order to achieve its Quality objectives and meet its customer's expectations.

**Select and train its employees** to generate the optimum balance between: Cost & Quality, Speed & Accuracy and Efficiency & Excellence.

**Adhere to its long-term strategy** of continuously improving the way, business is conducted as well as providing appropriate resources, friendly work culture and a safer work environment.

**Expand in new ventures:** the pursuit of growth and excellence has no compromise.

We are dedicated to our slogan:

**“ Commitment to Quality ”**

yours Truly,

**Managing Director**  
1<sup>st</sup> July 2008.

END OF SECTION






# NORTH WEST ENGINEERING WORKS L.L.C.

## QUALITY CONTROL PLAN

Ref No.: NW/P/QC/001 Rev: 00 Date: 16/02/2017

Project Name :  
Client :  
M.Contractors :

SL.NO	ACTIVITY	CONTROLLING DOCUMENT	ACCEPTANCE CRITERIA	VERIFICATION DOCUMENT	FREQUENCY OF INSPECTION	RESPONSIBLE PERSON	INSPECTION TEST CODE	
							NW	CLIENT
1	MATERIAL APPROVAL	APPROVED DRAWING	MATERIAL AS PER DRG / GRADE / SPECIFICATION	MAR	ONCE	ESTIMATION MANAGER	PD	RD
2	RECEIVING INSPECTION	MATERIAL PURCHASE ORDER/ DRG /SPECS/GRADE	MILL CERTIFICATE & MATERIAL SPECS, ELECTRODE BATCH CERT. MATERIAL AS PER PURCHASE ORDER	MATERIAL IDENTIFICATION REPORT WITH MTC	ONCE	QA/QC ENGINEER	W/PD	RD
3	FABRICATION							
3.1	CHECK WEB, FLANGE	APPROVED DRAWING	DIMENSIONS AS PER APPROVED DRAWING	FIT UP INSPECTION REPORT	100%	QC INSPECTOR/ QA/QC ENGINEER	W/PD	S/RD
3.2	CHECKING OF CONNECTION PLATES	APPROVED DRAWING	DIMENSIONS AS PER APPROVED DRAWING	FIT UP INSPECTION REPORT	100%	QC INSPECTOR/ QA/QC ENGINEER	W/PD	S/RD
3.3	CHECK FIT UP & DIMENSION OF THE MEMBERS	APPROVED DRAWING	DIMENSIONS AS PER APPROVED DRAWING	FIT UP INSPECTION REPORT	100%	QC INSPECTOR/ QA/QC ENGINEER	W/PD	S/RD
4	WELDING							
4.1	CHECK WELD DIMENSION	AWS D1. 1	GENERAL NOTES IN APPROVED DRAWING, CONTRACT & AWS D1. 1	WELDING INSPECTION REPORT	100%	QA/QC ENGINEER	W/PD	S/RD
4.2	CHECK WELD DEFECTS	AWS D1. 1	AWS D1.1 Table 6.1	WELDING INSPECTION REPORT	100%	QA/QC ENGINEER	W/PD	S/RD

		NORTH WEST ENGINEERING WORKS L.L.C.						
		<b><u>QUALITY CONTROL PLAN</u></b>					Ref No.: NW/P/QC/001 Rev: 00 Date: 16/02/2017	
Project Name		:						
Client		:						
M.Contractor		:						
SL.NO	ACTIVITY	CONTROLLING DOCUMENT	ACCEPTANCE CRITERIA	VERIFICATION DOCUMENT	FREQUENCY OF INSPECTION	RESPONSIBLE PERSON	INSPECTION TEST CODE	
							NW	CLIENT
5	SURFACE PREPARATION							
5.1	SURFACE CLEANLINESS (BLASTING )	PROJECT SPECIFICATION	FREE FROM THE TRACES OF ABRASIVE LOOSE SCALE OR DIRT	BLASTING & PAINTING INSPECTION REPORT	RANDOM	QA/QC ENGINEER	W/PD	RD
6	PAINTING							
6.1	APPROVAL OF PAINT	MATERIAL APPROVAL SHEET (MAS)	MAS APPROVED BY CLIENT	MATERIAL APPROVAL SHEET (MAS)		ESTIMATION MANAGER	PD	H/RD
6.2	APPLY ONE COAT OF EPOXY PRIMER ON ALL PRIMARY STEEL MEMBERS	PAINT DATA SHEET	MIN DFT - 50 MICRONS	PAINTING INSPECTION REPORT	RANDOM	QA/QC ENGINEER	W/PD	RD
6.3	INSPECTION OF OVERALL PRODUCT QUALITY & DISPATCH	NORTH WEST PROCEDURE # NW/W/PD/006	APPROVED DRAWINGS	DELIVERY NOTE	RANDOM	PRODUCTION MANAGER, QA/QC ENGINEER	W/PD	RD



## **HSE POLICY**





## **NORTH WEST ENGINEERING WORKS L.L.C.**

P.O. BOX # 123, P.C. 124 RUSAYL, SULTANATE OF OMAN

TEL # 24446692, FAX # 24446693

### **1. HSE policy:**

Our primary object to achieving zero accident during Steel Structure Erection of "XXXX".

### **2. Responsibilities:**

#### **Project Coordinator:**

1. Be held responsible for HSE on site.
2. Chair in house monthly HSE meeting.
3. Investigation of all accidents.

#### **Foreman:**

1. He shall be responsible for all Erection activities within the work area.
2. He shall understand the line function responsibility of HSE enforcement at site.
3. Ensure that all required Protective Equipment (PPE) are available.
4. Carryout daily tool box talks.
5. He shall comply with client HSE procedures & instructions

### **3. Safety Meeting**

Following safety meeting shall be carried out at site:

1. HSE Induction – shall undergo course from the main contractor (Safety Engineer) before deployment to site.
2. Monthly HSE meeting by supervisor. All Erectors & Foreman shall attend this meeting. Accidents & incidents shall be discussed to be recorded and copy to be given to Main Contractor.

### **4. Weekly SHE Meeting**

1. Engineer / Foreman shall carry out tool box meeting every week. Health & Protection shall be covered in the weekly meeting.
2. All shall attend weekly Tool Meeting of the Al Adrak.
3. Records of weekly meeting shall be submitted to main contractor.

### **5. Tool Box Talks**

1. Site Foreman shall carry out toolbox talks daily prior to start of work. He shall explain the safe method of work related to current activities.
2. Topics of the Tool Box shall also include.
3. Daily tool box meeting record shall be maintained by sub contractor.

### **6. Risk Assessment**

1. Risk assessment and Hazard analysis shall be carried out by site Supervisor or Erection in charge at site.
2. Job safety analysis will be made prior work.



## **NORTH WEST ENGINEERING WORKS L.L.C.**

P.O. BOX # 123, P.C. 124 RUSAYL, SULTANATE OF OMAN

TEL # 24446692, FAX # 24446693

3. Necessary permit to work has to be taken before the work commences and get approval from the site HSE. (Lifting operations, working at height, hot work, night work etc.)

### **7. Personnel Protection**

#### **Safety Equipments:**

The following Protective Equipment must be used by North West Engg. employees at site.

1. Safety Helmet
2. Safety Footwear
3. Coverall
4. Hand Gloves,(Leather or Cotton)
5. Safety Harness
6. Safety Goggles

### **8. Tool & Equipment**

1. Impact Wrench Machine
2. Drill Machine
3. Screw Machine
4. Grinder Machine
5. D- Cycle shackle
6. Nylon sling
7. Nylon Rope
8. Scaffolding or Cherry Picker by Main Contractor
9. 25 Ton Crane
10. Forklift by Main Contractor

All Tools and Equipments must be suitable for the purpose. All tools and equipments will have safety guards; no employee will remove safety guard for working.

All tools shall be inspected by the user and Supervisor

Foreman / Employee should ensure that all Electric Equipment are switched off before leaving site after work.

No authorised electrical connections used only industrial socket.

### **9. Crane and Lifting Equipment**

- 1) Crane lifting equipment shall have a current inspection certificate by Al Sarooj etc.
- 2) Operator shall have a valid Operation License
- 3) Signal for Crane Operator shall given only dedicated signal men.
- 4) All lifting operations shall be carried out under the control of one person who is experienced.
- 5) All lifting appliances shall have a valid test and examination certificate.
- 6) All lifting appliances shall be colour coded.
- 7) Daily crane inspection by the operator and to be recorded.
- 8) Lifting area to be barricaded.



## **NORTH WEST ENGINEERING WORKS L.L.C.**

P.O. BOX # 123, P.C. 124 RUSAYL, SULTANATE OF OMAN

TEL # 24446692, FAX # 24446693

9) Use tag line for lifting.

10) Weekly check list of crane shall be maintained and copy to be submitted to AATC site HSE.

### **10. Working at Height**

For safety of the Erector, while working on the height during him walks on the top flange, safety belt will be tied to a wire sling. He will carry forward the sling while he proceeds further on the rafter, wire sling and safety harness need to be approved by main contractor HSE

### **11. Scaffolding or Cherry Picker by Main Contractor**

1. Scaffolding shall be inspected on a daily by Scaffolding Inspector. On approval work will start.
2. Scaffolding materials shall be a good quality and free from damage. Material should be inspected on request basis.
3. Instead of scaffolding may use man lift for steel erection.
4. Shall follow scaff tag.

### **12. House keeping**

1. House keeping to be done at site
2. Emergency response? Emergency and important telephone no to contact of sub-contractor
3. Emergency vehicle at site to be provided by Main Contractor.

“End”





## **NORTH WEST ENGINEERING WORKS L.L.C.**

P.O. BOX # 123, P.C. 124 RUSAYL, SULTANATE OF OMAN

TEL # 24446692, FAX # 24446693

# **HSE PLAN**

## **CONTENTS**

- 1. HSE policy**
- 2. Responsibility**
- 3. Safety Meeting**
- 4. Tool Box Meeting**
- 5. Tool Box Talks**
- 6. Risk Assessment**
- 7. Personnel Protective Equipment (PPE)**
- 8. Tool & Equipments**
- 9. Crane & Lifting Equipment**
- 10. Working at height**
- 11. Scaffolding or Cherry Picker**
- 12. House Keeping**



## **ORGANIZATION CHART**



# NORTH WEST ENGINEERING WORKS L.L.C.

Management System

Quality Manual

Ref: NW/M/MS/019

Rev: 00

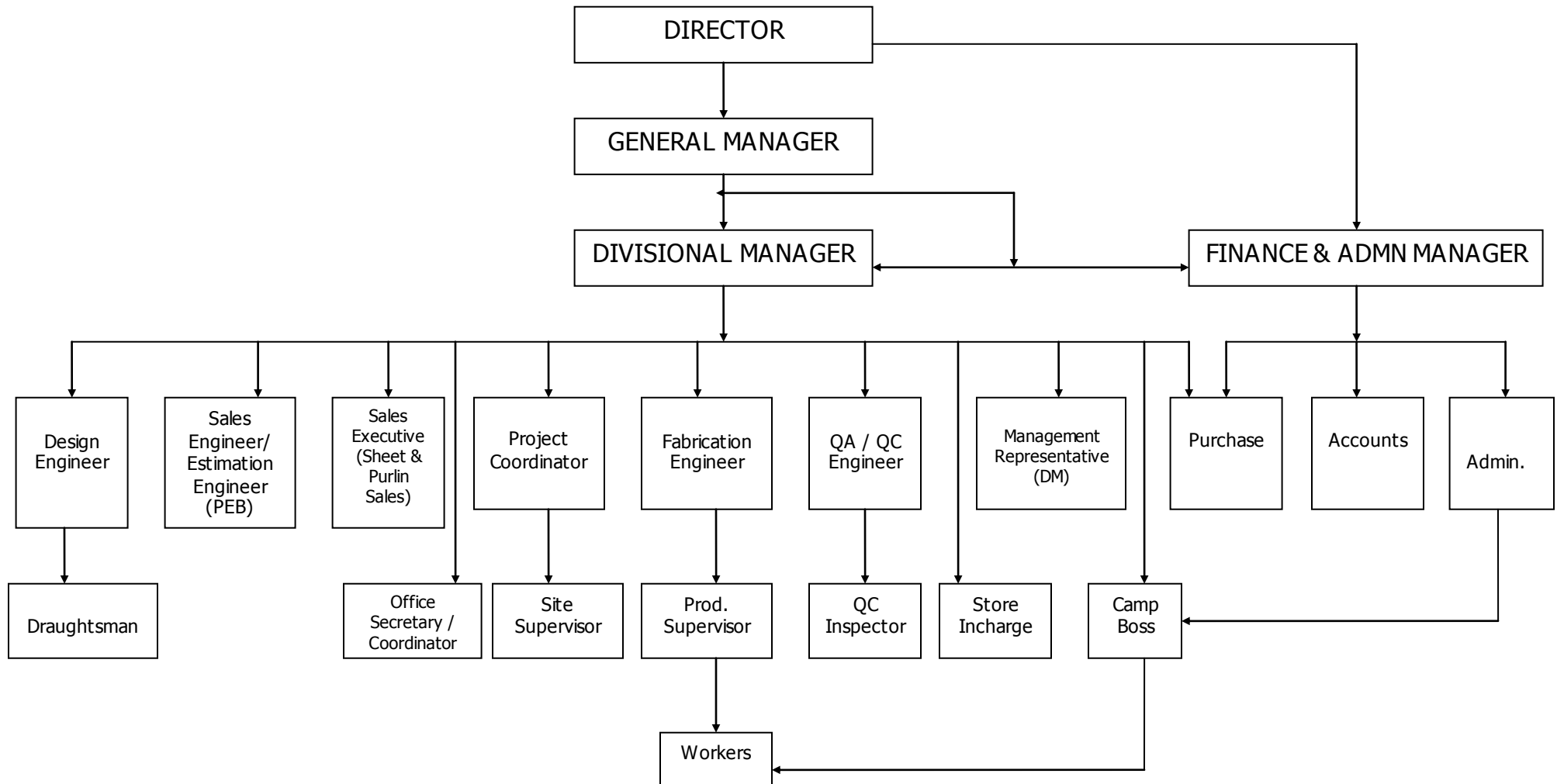
Date: 01/07/2008

Issue: 01

Rusayl

## COMPANY ORGANIZATION CHART

Page 1 of 1







## **METHOD STATEMENT**



## NORTH WEST ENGINEERING WORKS LLC

PO 123, PC 124, RUSAYL IND. ESTATE, SULTANATE OF OMAN

Tel. 24446692, fax. 24446693 E-mail ID : nwewllc@omantel.net.om

### *METHOD STATEMENT FOR ERECTION OF STRUCTURAL STEEL*

CLIENT	DATE OF ISSUE	DOCUMENT NO	REV NO.
-----	13/03/17	NW/MS/EREC/01	00

Project : -----

Main Contractor : -----

Sub Contractor : North West Engineering Works L.L.C.

Prepared By : ----- (Project Coordinator)

Reviewed & Approved By: B.D.Singh (Divisional Manager)

Date : 13/03/2017

Signature :

The method of statement is

Approved :

Approved with comments :

Not approved :

Signed:

-----

## **METHOD STATEMENT**

### **INTRODUCTION:**

The purpose of this method statement is to describe and communicate the procedures and requirements for the above-mentioned work. This method statement must be read by the supervisor to the operatives who will be undertaking this work.

### **A. SITE ACTIVITIES:**

- Material Handling & Storage.
- Installation of suitable scaffolding.
- Fixing of Crane.
- Erection of Steel Frames.
- Alignment & Bolt Tightening.
- Paint Touch Up.
- Fixing of Sheets.
- Handing Over.

### **B. ERECTION OF STRUCTURAL STEEL:**

#### **Preliminary Works:**

After taking over the site, any temporary facility required for erection work will be setup by ----- . Suitable covered stores (For Nuts, Bolts, Washers, Screws, etc.) and open storage yard will be identified & provided by ----- .

#### **Receipt of Material, Storage and Handling:**

As soon as the fabricated materials received at site, all materials will be stored in such a sequence that it will permit the most efficient and economical performance of the erection work. Fabricated material shall be handled and stacked in such a way that minimum damage is caused to the components / members.



### **Erection Sequence :**

- Check C/C dimensions of Anchor bolts in both directions.
- Check Level of Pedestals in coordination with Oasis ----- (Pedestal Level will be provided by -----).
- Erection of scaffolding by ----- near each COLUMN below base plate of rafter along the grid.
- Location of 25 T crane parking will be outside of building after basement retaining wall and exact location will be decided in coordination with ----- at site.
- Shift the steel material from trailer to the floor slab for assembly of members.
- After assembly check the tightening of nuts and bolts and plan for erection of members.
- During steel erection, no man movement will be allowing below rafters and other agency needs to take care.
- First rafter will be erected then second rafter.
- Crew will be allocate on to rafter to fix the roof purlin
- In between two rafters, purlin will be fixing before proceeding for next rafters.
- Similarly rafters and purlin fixing will be continuing to the end of process.
- Checking of Alignment & Tightening of Bolts.
- Request for inspection to CONSULTANT for structural steel erection.
- After approval of RFI of steel structure, NW will proceed for the fixing of sandwich panels.
- **Handing over of Building.**



## **CERTIFICATIONS**



## **ISO - 9001: 2015 CERTIFICATE**



# CERTIFICATE

Management system as per  
**ISO 9001 : 2015**

In accordance with TÜV NORD CERT procedures, it is hereby certified that

**North West Engineering Works L.L.C.**  
**PC 124, Rusayl Ind. Estate**  
**P.O. Box 123**  
**Sulatante of Oman**

applies a management system in line with the above standard for the following scope

**Design, Manufacturing and Erection of Pre Engineered Steel Building,  
Profile Sheets, "Z" Purlins and other related accessories**

Certificate Registration No. 44 100 090321  
Audit Report No. 5800 7099

Valid from 2018-04-15  
Valid until 2021-04-14  
Initial certification 2009



Certification Body  
at TÜV NORD CERT GmbH

Abu Dhabi, 2018-02-24

This certification was conducted in accordance with the TÜV NORD CERT auditing and certification procedures and is subject to regular surveillance audits.

TÜV NORD CERT GmbH

Langemarckstraße 20

45141 Essen

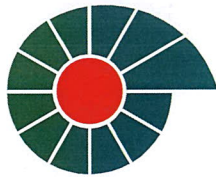
[www.tuev-nord-cert.com](http://www.tuev-nord-cert.com)







## **PDO CERTIFICATE**



شركة تنمية نفط عُمان ش.م.م  
Petroleum Development Oman L.L.C.

CERTIFICATE OF REGISTRATION - PRODUCT VENDOR

CERTIFICATE NUMBER: **B2016-03041**

Vendor Code: **100571**

Date of Issue: **17/11/2016**

PETROLEUM DEVELOPMENT OMAN LLC

CERTIFIES THAT:

**MANUFACTURER : NORTH WEST ENGG. WORKS LLC**

**COUNTRY OF ORIGIN : OMAN**

**LOCAL AGENT : NORTH WEST ENGG. WORKS LLC**

**COMMERCIAL AGENCY NO.: 1464590**

**POSTAL ADDRESS : P.O. Box 124, PC 124 - SULTANATE OF OMAN**

IS REGISTERED WITH THE COMPANY AS AN APPROVED PRODUCT VENDOR WITH EFFECT FROM THE DATE OF ISSUE OF THIS CERTIFICATE FOR THE FOLLOWING PRODUCT GROUP CATEGORIES:

**CIVIL PRODUCTS:**

AVME NUMBER	PRODUCT CATEGORY	PRODUCT SUB CATEGORY	MATERIALS GROUP
AVME 10.4.2	BUILDING MATERIALS- ROOFING, WALLING & CEILING	ROOF SHEETINGS	80DAAA
AVME 10.5.1	STRUCTURAL STEEL & METALWORK	FABRICATED STEEL STRUCTURES	61ASAA
AVME 10.5.3	STRUCTURAL STEEL & METALWORK	PURLINS & ROOF STRUCTURES	61ASAA
AVME 10.4.1	BUILDING MATERIALS- ROOFING, WALLING & CEILING	ROOF DECKINGS & COATINGS	80DAAA



LEAD CP DATA & SYSTEM MANAGEMENT

THIS CERTIFICATE IS VALID UNTIL: **20/01/2019**

PLEASE REFER OVERLEAF FOR DETAILS.





## **P.I.E. CERTIFICATE**



Ref: F.D/G.M/ //2016  
Greg :1/12/2016

الرقم :د.م/غ.م/ ٧٧٩ / ٢٠١٦  
التاريخ الميلادي: ٢٠١٦/١٢/١ م

**North West Engineering Works  
Rusayl**

الفاضل/ المدير العام المحترم  
الشركة الشمالية الغربية للأعمال الهندسية

**After Compliments,**

تحية طيبة وبعد،،،

**Subject:-Rent 2017**

**الموضوع:-القيمة الاجارية لعام ٢٠١٧ م**

We would like to bring to your kind attention that the rent of 2017 is due on 1/1/2017 As follows:-

نود إفادتكم بأن موعد استحقاق القيمة الاجارية على قطعة الأرض والمصنع يحين في ٢٠١٧/١/١ طبقاً للآتي:-

- |  |           |
|--|-----------|
| 1. Rent for factory B                    | 9112/800  |
| 2. Rent for Add. Land 1507               | 2038/500  |
| 3. Rent for Add. Land 2-1507             | 294/950   |
| 4. Rent for Add. Land 1&2 for plot # 814 | 11528/000 |

- |                                    |           |
|------------------------------------|-----------|
| ١-إيجار المصنع ب                   | ٩١١٢/٨٠٠  |
| ٢-إيجار الأرض إمتداد ١٥٠٧          | ٢٠٣٨/٥٠٠  |
| ٣-إيجار الأرض إمتداد ٢-١٥٠٧        | ٢٩٤/٩٥٠   |
| ٤-إيجار الأرض إمتداد ١ و ٢ ارض ٨١٤ | ١١٥٢٨/٠٠٠ |

**Total** 22974/250

**الإجمالي**

٢٢٩٧٤/٢٥٠

We hope for an early payment on the above mentioned date for you to avoid interest on delayed payment, or you can settle your payments in 2 installments(1<sup>st</sup> in 1/1/2017 and 2<sup>nd</sup> in 1/7/2017).

أملين أن يتم السداد في الموعد المذكور أعلاه وعدم التأخير حتى لا يتم احتساب فوائد تأخير اعتباراً من تاريخ الاستحقاق الفعلي، علماً بأنه يمكنكم السداد على قسطين الأول في ٢٠١٧/١/١ والثاني في ٢٠١٧/٧/١ م على أن يتم موافاتنا بالشيكات في ٢٠١٧/١/١ م.

You are kindly requested to submit your cheques on 1/1/2017.

وتفضلوا بقبول فائق الاحترام،،،

**Thanking you for your co-operation**

غالية بنت هاشل المصلحية  
المكلفة بأعمال مدير الدائرة المالية







## **CHAMBER OF COMMERCE CERTIFICATE**







## **INDUSTRIAL CERTIFICATE**



## شهادة التسجيل الصناعي

تاريخ الترخيص : 1994/08/22

رقم الترخيص : 01004405

تاريخ التسجيل : 1995/09/30

رقم التسجيل : 01003486

تاريخ بدء الانتاج : 1994/01/01

اسم المنشأة : الشركة الشمالية الغربية للأعمال الهندسية ش م م

موقع المشروع : الرسيل/السيب/محافظة مسقط

العنوان : ص ب . 112 / 2756

الانشطة الصناعية :

1 - 281105: صناعة وتركيب المنتجات المعدنية المصنوعة من أجزاء في الوحدة ذاتها والمستخدم في البناء والتشييد مثل النوافذ والأبواب

الطاقات الانتاجية السنوية للمنتجات المسجلة :-

بطاقة	1,000	طن	1 - 73269099: غيرها من مصنوعات من حديد او صلب اخر
بطاقة	4,200	طن	2 - 72104100: منتجات مموجة من حديد او صلب مطلية او مغطاة بالزنك
بطاقة	500	طن	3 - 72029000: خلنط حديديه اخر.

عدد نوبات العمل : 1

عدد أيام العمل في السنة : 300

تاريخ إنتهاء التسجيل : 2020/01/20



٢٠٢١ / ٣ / ١٥  
أمين السجل الصناعي



## شهادة التسجيل الصناعي

تاريخ الترخيص : 1994/08/22

رقم الترخيص : 01004405

تاريخ التسجيل : 1995/09/30

رقم التسجيل : 01003486

تاريخ بدء الانتاج : 1994/01/01

اسم المنشأة : الشركة الشمالية الغربية للأعمال الهندسية ش م م

### ملاحظات :-

- هذه المنشأة خاضعة لقانون (نظام) التنظيم الصناعي الموحد لدول مجلس التعاون لدول الخليج العربية ولائحته التنفيذية
- المعلومات الواردة في طلب الحصول على الترخيص الصناعي الخاصة بالمنشأة دقيقة وتمثل المشروع الذي تقوم المنشأة بتشغيله
- لا يجوز إحداث تغيير في المشروع الصناعي من حيث توسعته أو تطويره أو تغيير إنتاجه أو دمج في مشروع صناعي أو تجزئته لأكثر من مشروع أو تغيير موقعه أو التصرف به جزئيا أو كليا إلا بترخيص من الوزير أو من يفوضه
- يجب إلزام المنشأة في إنتاجها بالمقاييس والمواصفات التي تحددها القوانين والقرارات الصادرة في هذا الشأن
- يحق للمنشأة الحصول على المزايا والإعفاءات الخاصة بالمشاريع الصناعية
- للمنشأة الحق في الحصول على التعرفة الكهربائية الصناعية المعمول بها بموجب القرار الوزاري رقم (95/56) وذلك بالتنسيق مع شركة الكهرباء في منطقتها

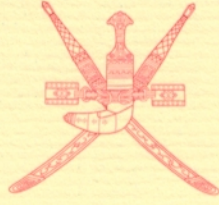


٢١/٣/٢٠١٩  
أمين السجل الصناعي



**COMPANY REGISTRATION CERTIFICATE (CR)**





شهادة تسجيل تجاري (مرهون)

تشهد أمانة السجل التجاري بأن

الشركة الشمالية الغربية للأعمال الهندسية ش م م

1995/01/21

بتاريخ

1464590

قد سجل/سجلت تحت رقم سجل تجاري

شركة محدودة المسؤولية

الشكل القانوني :

محافظة مسقط/مطرح/وادي الكبير

المركز الرئيسي:

وذلك وفقا لأحكام قانون السجل التجاري رقم 74/3 م الصادر بتاريخ 1974/5/14 م وتعديلاته، وأحكام قانون تنظيم وتشجيع الصناعة رقم 79/1 م الصادر بتاريخ 1979/1/4 م

ملاحظات:



أمانة السجل التجاري

2020/01/20

1. تنتهي صلاحية هذه الشهادة بتاريخ

2. هذه الشهادة لإثبات التسجيل، وفي حالة طلب معلومات مفصلة يرجع إلى نسخة التسجيل المفصلة المصدقة من أمانة السجل التجاري

3. يجب تقديم طلب التجديد خلال مدة لا تتجاوز الشهر التالي لانتهاء مدة القيد طبقا للقرار الوزاري رقم 1986/121 م وتعديلاته

بتاريخ: 2015/02/03

طبعت هذه الشهادة بواسطة: سالم الغيلاني



CR Number	1464590	(Mortgaged)	(مرهون)	1464590	رقم السجل التجاري
Commercial Name	الاسم التجاري الشركة الشمالية الغربية للأعمال الهندسية ش م م				
Legal Type	Limited Liability Company	الشكل القانوني شركة محدودة المسؤولية			
Head Q	Wadi Kabir / Muttrah / Muscat	المركز الرئيسي الوادي الكبير / مطرح / محافظة مسقط			
P.O.Box:	2756	Postal Code:	112	رمز بريدي: 112	ص.ب: 2756
Telephone:	968 99478487	Fax:	968 24811724	968 24811724	هاتف: 968 99478487
Email:	البريد الإلكتروني:				
Establishment Date:	01/01/1995	تاريخ التأسيس: 1995/01/01			
Registration Date:	21/01/1995	Active	نشط	1995/01/21	تاريخ التسجيل التجاري
Expiry Date:	20/01/2020	تاريخ انتهاء السجل التجاري: 2020/01/20			
Fiscal Year End:	31/12	تاريخ انتهاء السنة المالية: 12/31			
Cash Capital:	1,180,000	Kind Capital:	0	رأس المال النقدي: 1,180,000	رأس المال العيني: 0
Total Capital (Omani Riyal):	1,180,000	رأس المال الكلي (بالريال العماني): 1,180,000			
No. of Shares:	1180000	عدد الأسهم: 1180000			
Share Value :	1.000	قيمة السهم: 1.000			

Registered Commercial Activities

الأنشطة التجارية المسجلة

271004: Manufacture of blooms, billets, states or other forms of steel or alloy steel, rolled, drawn extruded or forged iron, steel or alloy steel products.	271004: صناعة صفائح وألواح ولفاف شريطية وقضبان وأسياخ وزوايا وأسلاك ومقاطع بكافة أشكالها
281105: Manufacture and installation of metal structures from self-manufactured parts for use on construction works such as windows, doors, staircases etc.	281105: صناعة وتركيب المنتجات المعدنية المصنوعة من أجزاء في الوحدة ذاتها والمستخدم في البناء والتشييد مثل النوافذ والأبواب والسلالم والمظلات وأشغال معدنية مماثلة (ورش الحدادة)
452004: Water, electricity and telephone network and stations construction contracts	452004: مقاولات إنشاء شبكات ومحطات المياه والكهرباء والتلفون
511003: Export and import offices	511003: مكاتب التصدير والاستيراد

إعادة طباعة :

MOHSIN ALI SAIF AL

صفحة 1 من 7

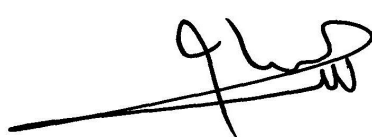
Page 1 of 7

أمانة السجل التجاري  
2016/08/09



رقم السجل التجاري 1464590 (مرهون) (Mortgaged) CR Number 1464590

Places of Activities		أماكن الأنشطة	
<b>Reg. Date:</b> 30/09/1995	<b>ID:</b> 9867120	<b>الرمز:</b> 9867120	<b>تاريخ تسجيل:</b> 1995/09/30
Al Rusayl / Al-Seeb / Muscat		الرسيل / السيب / محافظة مسقط	
<b>Industrial Reg. Number:</b>	01003486	01003486	<b>رقم السجل لصناعي :</b>
<b>License Reference:</b> 01003486		01003486	<b>متطلبات الترخيص:</b>
<b>Issue Date:</b> 30/09/1995		1995/09/30	<b>تاريخ الإصدار:</b>
<b>Expiration date:</b> 20/01/2020		2020/01/20	<b>تاريخ انتهاء الصلاحية:</b>
281105: Manufacture and installation of metal structures from self-manufactured parts for use on construction works such as windows, doors, staircases etc.		281105: صناعة وتركيب المنتجات المعدنية المصنوعة من أجزاء في الوحدة ذاتها والمستخدم في البناء والتشييد مثل النوافذ والأبواب والسلالم والمظلات وأشغال معدنية مماثلة (ورش الحدادة)	
<b>Reg. Date:</b> 21/01/1995	<b>ID:</b> 3190915	<b>الرمز:</b> 3190915	<b>تاريخ تسجيل:</b> 1995/01/21
Wadi Kabir / Muttrah / Muscat		الوادي الكبير / مطرح / محافظة مسقط	
511003: Export and import offices		511003: مكاتب التصدير والاستيراد	
452004: Water, electricity and telephone network and stations construction contracts		452004: مقاولات انشاء شبكات ومحطات المياه والكهرباء والتلفون	
271004: Manufacture of blooms, billets, states or other forms of steel or alloy steel, rolled, drawn extruded or forged iron, steel or alloy steel products.		271004: صناعة صفائح وألواح ولفاف شريطية وقضبان وأسياخ وزوايا وأسلاك ومقاطع بكافة أشكالها	
<b>Reg. Date:</b> 27/11/1995	<b>ID:</b> 3190951	<b>الرمز:</b> 3190951	<b>تاريخ تسجيل:</b> 1995/11/27
Al Rusayl / Al-Seeb / Muscat		الرسيل / السيب / محافظة مسقط	



أمانة السجل التجاري  
2016/08/09



إعادة طباعة :  
MOHSIN ALI SAIF AL

صفحة 2 من 7

رقم السجل التجاري 1464590 (مرهون) (Mortgaged) CR Number 1464590

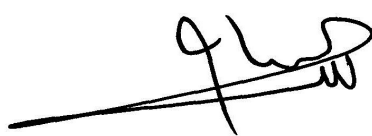
Partners/Board Members/Authorized Managers

أسماء الشركاء/أعضاء مجلس الإدارة

Name	KAMAL ASHRAF ABDUL RAZAQ	الاسم	كمال أشرف عبدالرزاق
Nationality:	Oman	الجنسية:	عمان
ID Number:	61744702	Passport No.:	MT8011511
Designation:	Limited Liability Partner	رقم الهوية:	61744702
Registration Date:	07/06/2016	رقم جواز السفر:	MT8011511
Num. and Perc. Shares:	698010 ( 59.15 )%	الصفة:	شريك محدود المسؤولية
		عدد ونسبة الحصص:	698010 ( 59.15 )%

Name	HUNAINA SULTAN AHMED AL MUGHAIRY	الاسم	حنينة سلطان احمد المغيرة
Nationality:	Oman	الجنسية:	عمان
ID Number:	1921406	Passport No.:	GG4911541
Designation:	Limited Liability Partner	رقم الهوية:	1921406
Registration Date:	21/01/1995	رقم جواز السفر:	GG4911541
Num. and Perc. Shares:	77593 ( 6.58 )%	الصفة:	شريك محدود المسؤولية
		عدد ونسبة الحصص:	77593 ( 6.58 )%

Name	MAIMOONA SULTAN KHAMIS AL-MUGHAIRI	الاسم	ميمونة سلطان خميس المغيرة
Nationality:	Oman	الجنسية:	عمان
ID Number:	7738541	Passport No.:	02032674
Designation:	Limited Liability Partner	رقم الهوية:	7738541
Registration Date:	16/02/2002	رقم جواز السفر:	02032674
Num. and Perc. Shares:	61911 ( 5.25 )%	الصفة:	شريك محدود المسؤولية
		عدد ونسبة الحصص:	61911 ( 5.25 )%



أمانة السجل التجاري  
2016/08/09



إعادة طباعة :



MOHSIN ALI SAIF AL

صفحة 3 من 7



CR Number	1464590	(Mortgaged)	(مرهون)	1464590	رقم السجل التجاري
Name	MAHFOODH SULTAN KHAMIS AL MUGHAIRI			محفوظ سلطان خميس المغيري	الاسم
Nationality:	Oman			عمان	الجنسية:
ID Number:	1248818	Passport No.:	02455404	02455404	رقم الهوية: 1248818 رقم جواز السفر:
Designation:	Limited Liability Partner			شريك محدود المسؤولية	الصفة:
Registration Date:	16/02/2002			2002/02/16	تاريخ التسجيل:
Num. and Perc. Shares:	123828	( 10.49 ) %	( 10.49 ) %	123828	عدد ونسبة الحصص:
Name	SALHA SULTAN KHAMIS AL MUGHAIRI			صالحه سلطان خميس المغيرية	الاسم
Nationality:	Oman			عمان	الجنسية:
ID Number:	2438787	Passport No.:	02542914	02542914	رقم الهوية: 2438787 رقم جواز السفر:
Designation:	Limited Liability Partner			شريك محدود المسؤولية	الصفة:
Registration Date:	16/02/2002			2002/02/16	تاريخ التسجيل:
Num. and Perc. Shares:	61911	( 5.25 ) %	( 5.25 ) %	61911	عدد ونسبة الحصص:
Name	TAHA SULTAN KHAMIS AL-MUGHAIRI			طه سلطان خميس المغيري	الاسم
Nationality:	Oman			عمان	الجنسية:
ID Number:	1524003	Passport No.:	03265957	03265957	رقم الهوية: 1524003 رقم جواز السفر:
Designation:	Limited Liability Partner			شريك محدود المسؤولية	الصفة:
Registration Date:	16/02/2002			2002/02/16	تاريخ التسجيل:
Num. and Perc. Shares:	156747	( 13.28 ) %	( 13.28 ) %	156747	عدد ونسبة الحصص:

إعادة طباعة :

MOHSIN ALI SAIF AL

صفحة 4 من 7

Page 4 of 7

أمانة السجل التجاري  
2016/08/09



CR Number 1464590 (Mortgaged) (مرهون) 1464590 رقم السجل التجاري

Authorized Managers and Signatories

أسماء المفوضين بالإدارة و التوقيع

<b>Name</b> ANWAR ALAM	الاسم انور عالم
<b>Nationality:</b> India	الجنسية: الهند
<b>ID Number:</b> 60654604 <b>Passport No.:</b> Z2047185	رقم الهوية: 60654604 رقم جواز السفر: Z2047185
<b>Designation:</b> Authorized Manager - Joint	صفة التفويض: مدير مفوض - متحد
<b>Authorization Type:</b> Administrative, Financial	نوعية التفويض: إداري, مالي
<b>Authorization Limit:</b> 2000	حدود التفويض: 2000
<b>Registration Date:</b> 06/04/2002	تاريخ التسجيل: 2002/04/06
<b>Name</b> -	الاسم انور شفيق احمد خان
<b>Nationality:</b> Pakistan	الجنسية: باكستان
<b>ID Number:</b> 754600 <b>Passport No.:</b> 754600	رقم الهوية: 754600 رقم جواز السفر: 754600
<b>Designation:</b> Authorized Manager - Joint	صفة التفويض: مدير مفوض - متحد
<b>Authorization Type:</b> Administrative, Financial	نوعية التفويض: إداري, مالي
<b>Authorization Limit:</b> 2000	حدود التفويض: 2000
<b>Registration Date:</b> 06/04/2002	تاريخ التسجيل: 2002/04/06
<b>Name</b> HUNAINA SULTAN AHMED AL MUGHAIYR	الاسم حنينة سلطان احمد المغيرة
<b>Nationality:</b> Oman	الجنسية: عمان
<b>ID Number:</b> 1921406 <b>Passport No.:</b> GG4911541	رقم الهوية: 1921406 رقم جواز السفر: GG4911541
<b>Designation:</b> Authorized Partner - Sole	صفة التفويض: شريك مفوض - منفرد
<b>Authorization Type:</b> Full	نوعية التفويض: مطلق
<b>Authorization Limit:</b> Unlimited	حدود التفويض: غير محدودة
<b>Registration Date:</b> 21/01/1995	تاريخ التسجيل: 1995/01/21

إعادة طباعة :

MOHSIN ALI SAIF AL

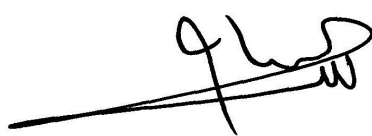
صفحة 5 من 7

Page 5 of 7

أمانة السجل التجاري  
2016/08/09



<b>CR Number</b> 1464590	<b>(Mortgaged)</b>	<b>(مرهون)</b> 1464590	<b>رقم السجل التجاري</b>
<b>Name</b> TAHA SULTAN KHAMIS AL-MUGHAIIRI			<b>الاسم</b> طه سلطان خميس المغيري
<b>Nationality:</b> Oman			<b>الجنسية:</b> عمان
<b>ID Number:</b> 1524003	<b>Passport No.:</b> 03265957	03265957	<b>رقم الهوية:</b> 1524003
<b>Designation:</b> Authorized Partner	- Joint		<b>صفة التفويض:</b> شريك مفوض
<b>Authorization Type:</b> Full			<b>نوعية التفويض:</b> مطلق
<b>Authorization Limit:</b> Unlimited			<b>حدود التفويض:</b> غير محدودة
<b>Registration Date:</b> 16/02/2002			<b>تاريخ التسجيل:</b> 2002/02/16
<b>Name</b> KAMAL ASHRAF ABDUL RAZAQ			<b>الاسم</b> كمال أشرف عبدالرزاق
<b>Nationality:</b> Oman			<b>الجنسية:</b> عمان
<b>ID Number:</b> 61744702	<b>Passport No.:</b> MT8011511	MT8011511	<b>رقم الهوية:</b> 61744702
<b>Designation:</b> Authorized Partner	- Sole		<b>صفة التفويض:</b> شريك مفوض
<b>Authorization Type:</b> Full			<b>نوعية التفويض:</b> مطلق
<b>Authorization Limit:</b> Unlimited			<b>حدود التفويض:</b> غير محدودة
<b>Registration Date:</b> 07/06/2016			<b>تاريخ التسجيل:</b> 2016/06/07
<b>Name</b> MAHFOODH SULTAN KHAMIS AL MUGHAIIRI			<b>الاسم</b> محفوظ سلطان خميس المغيري
<b>Nationality:</b> Oman			<b>الجنسية:</b> عمان
<b>ID Number:</b> 1248818	<b>Passport No.:</b> 02455404	02455404	<b>رقم الهوية:</b> 1248818
<b>Designation:</b> Authorized Partner	- Joint		<b>صفة التفويض:</b> شريك مفوض
<b>Authorization Type:</b> Full			<b>نوعية التفويض:</b> مطلق
<b>Authorization Limit:</b> Unlimited			<b>حدود التفويض:</b> غير محدودة
<b>Registration Date:</b> 07/06/2016			<b>تاريخ التسجيل:</b> 2016/06/07



أمانة السجل التجاري  
2016/08/09



إعادة طباعة :  
MOHSIN ALI SAIF AL

صفحة 6 من 7



CR Number 1464590 (Mortgaged) (مرهون) 1464590 رقم السجل التجاري

Registered Mortgages

الرهونات المسجلة

Lending Party	Oman Development Bank	الجهة الممولة	بنك التنمية العماني
Mortgage Registration Date	06/07/2011	2011/07/06	تاريخ تسجيل الرهن
Mortgage Contract End Date	05/07/2016	2016/07/05	تاريخ انتهاء عقد الرهن
Mortgage Value	1,000,000.000 OMR	1,000,000.000 ر.ع	قيمة الرهن
Mortgage Type	Governmental	حكومي	نوع الرهن
Grade	Excellent	الدرجة الممتازة	درجة الرهن
Documentation Location	MOCI	وزارة التجارة و الصناعة	مكان توثيق عقد الرهن
Mortgage Contract Number	1741/2011	1741/2011	رقم عقد الرهن
Mortgage Coverage	Full	الكل	تغطيته الرهن

Note: Digitally Signed Form

تنويه: موقعة رقميا من

This form has been signed and certified using a Digital Signature Certificate as specified under The Electronic Transactions Law of the Sultanate of Oman issued by His Majesty's Royal Decree 69/2008.

تم توقيع واعتماد هذه الإستمارة باستخدام خاصية الشهادات الموقعة رقميا وفقا لما هو وارد في قانون المعاملات الإلكترونية لسلطنة عمان والصادر بموجب المرسوم السلطاني رقم 69/2008.

To check the validity and authenticity of the digital certificate, please check the online service of National Digital Certification Center at <https://omanportal.gov.om/pkiservices/home.htm>

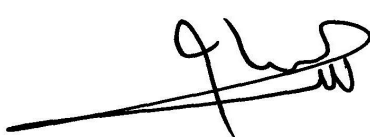
يرجى التحقق من الخدمات الإلكترونية المقدمة من المركز الوطني للشهادات الرقمية للتأكد من صلاحية ومصادقية الشهادات الرقمية وذلك عبر الرابط التالي <https://omanportal.gov.om/pkiservices/home.htm>

This certificate is issued based on Commercial Registration Act (3/1974) and does not exempt certificate holder from obtaining required approvals from competent authorities, including labor permits, before commencing commercial activity.

تم قيد المعلومات بهذا السجل بموجب قانون السجل التجاري (1974/3) ويستلزم على مالكة الحصول على موافقة الجهات المختصة قبل مباشرة أي نشاط اقتصادي متى كان النشاط مقيدا بموافقة مسبقة بما في ذلك استقدام وتشغيل القوى العاملة الوافدة

This certificate proves that certificate holder is registered member of Oman Chamber of Commerce and Industry for one year from company registration date.

هذا السجل منتسب لغرفة تجارة وصناعة عمان لمدة عام واحد من تاريخ التسجيل



أمانة السجل التجاري  
2016/08/09



إعادة طباعة :

MOHSIN ALI SAIF AL



صفحة 7 من 7



Reliability • Quality • Professional Service

**North West Engineering Works L.L.C.**

P.O. Box: 123, Postal Code: 124, Road No. 15,  
Rusayl Industrial Estate, Sultanate of Oman.  
Tel.: +968-2444 6692, 2444 6940 | Fax: +968-2444 6693  
E-mail: [info@nwewllc.com](mailto:info@nwewllc.com)